

FIXED/MARINE MOUNTED CRANE 601TM



Max dynamic moment [daNm]	1154
---------------------------	------

	Version	Q _{max}
Max capacity [kg]	1S	860
	2S	800

Crane weight [kg]	1S	145
	2S	164

Max working pressure	180 bar
Max oil flow to main relief valve	5 dm ³ /min
Oil tank capacity	17.5 dm ³
Winch weight	45 kg
Slewing moment	170 daNm
Slewing angle	328°
Max working heel	3°
Absorbed power	1.5 kW 2 HP
Design standard	DIN 15018 EN 12999

PTO Hydraulic crane versions

Distributor Pressure line = 3/8" P valve port - 9/16-18 Jic Fitting mounted
Distributor Tank line = 3/8" T valve port -3/4-16Jic Fitting mounted
Tank Suction line = 3/4" Plug mounted
Return Filter line = 3/8" filter port - 3/4-16 Jic Fitting mounted

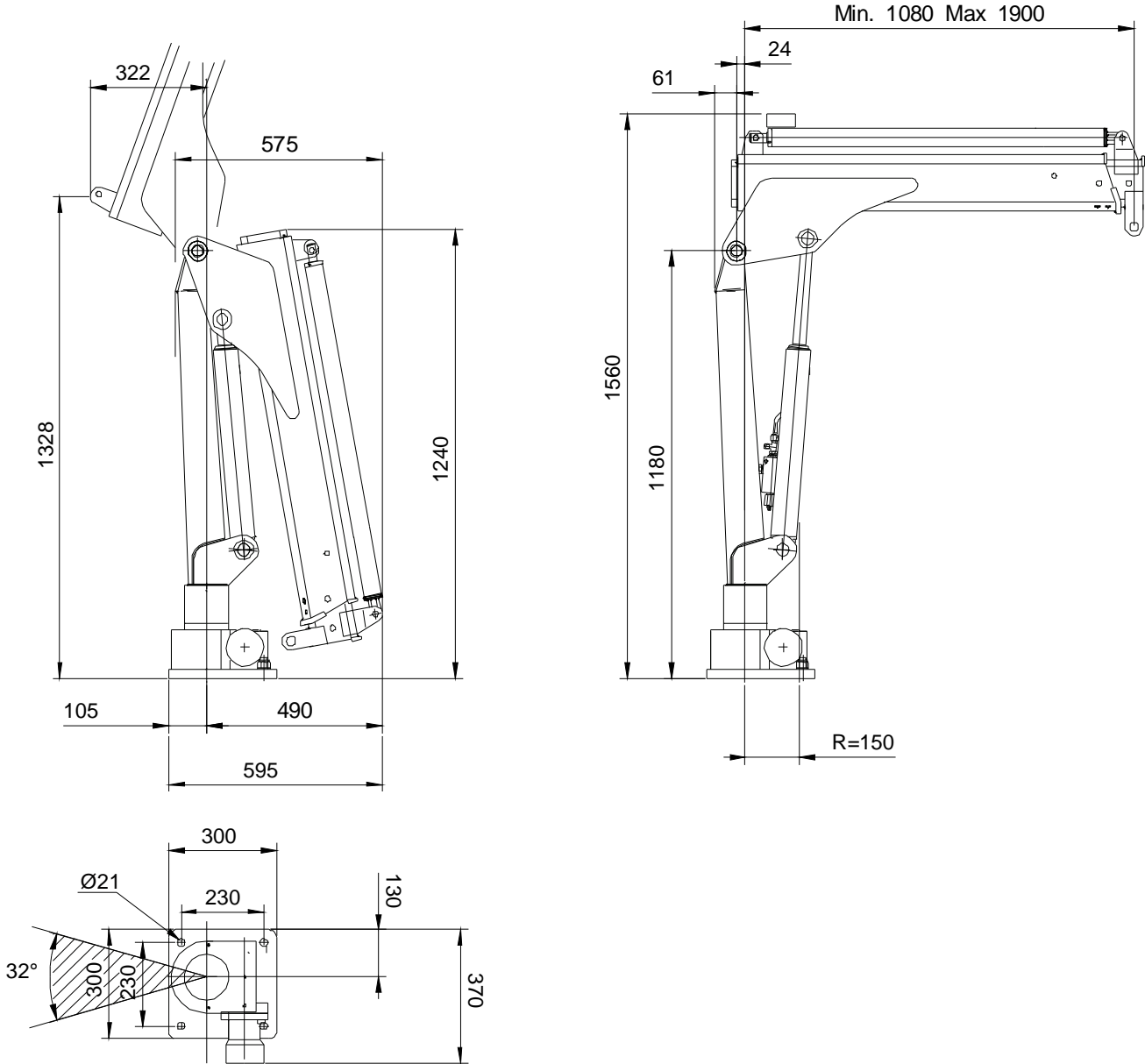
ETR crane versions

Distributor Pressure line = 3/8" P valve port - 9/16-18 Jic Fitting mounted
Distributor Tank line = 3/8" T valve port -3/4-16Jic Fitting mounted
Power Pack Pressure line = 1/4" P port - 9/16-18 Jic Fitting mounted
Power Pack Tank line = 1/4" T port - 9/16-18 Jic Fitting mounted



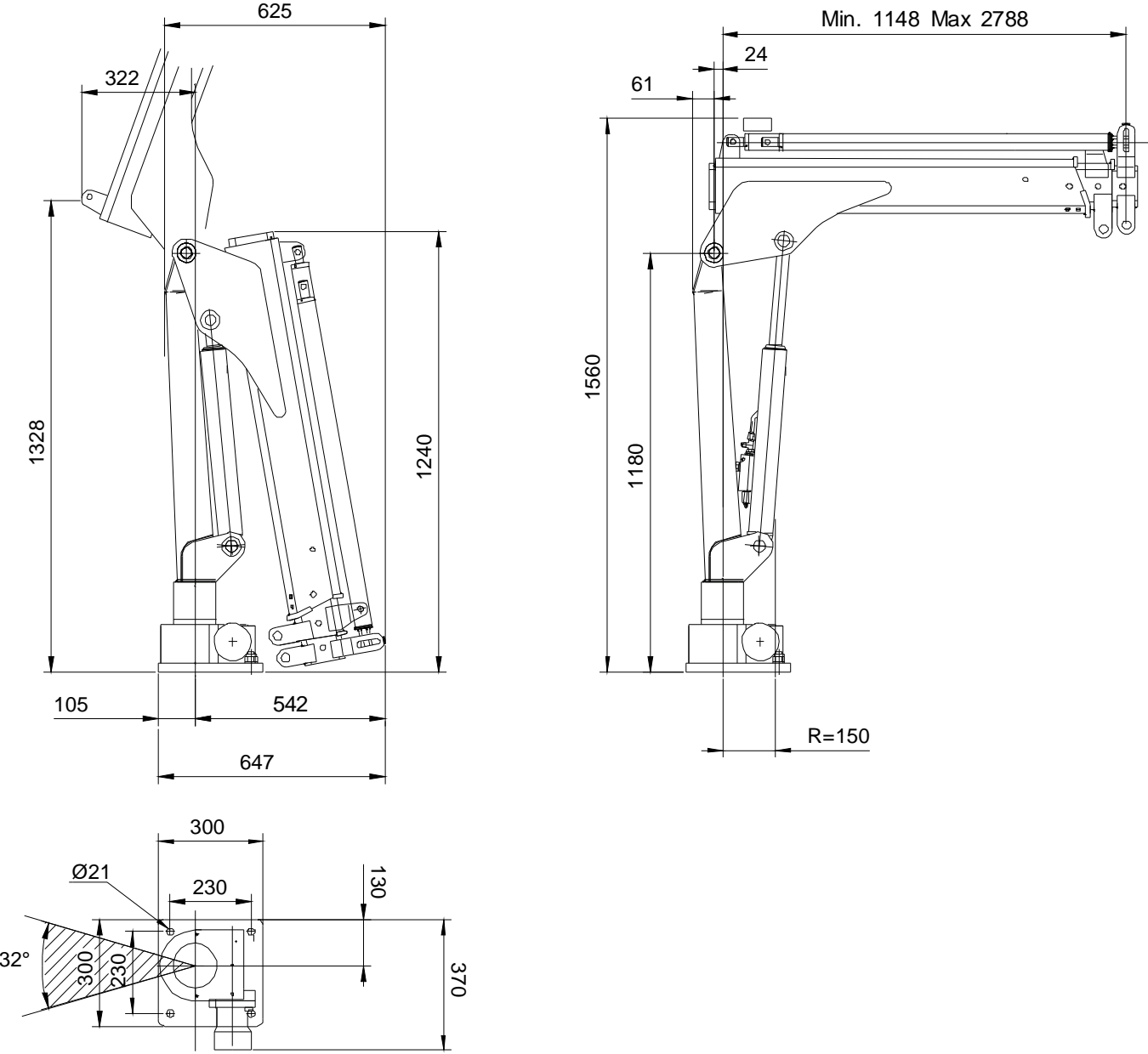
601TM TECHNICAL SHEET

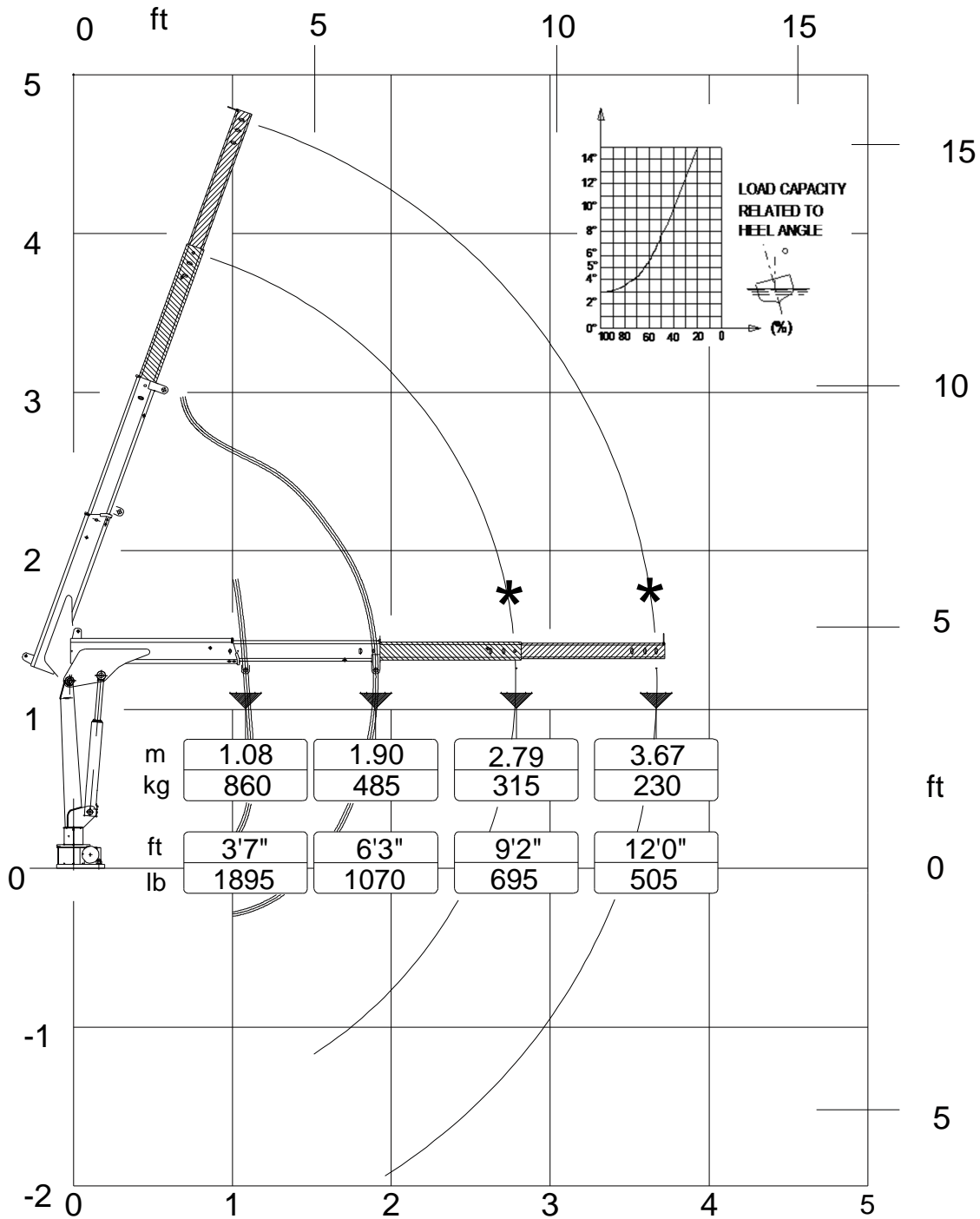
OVERALL DIMENSIONS 1S



601TM TECHNICAL SHEET

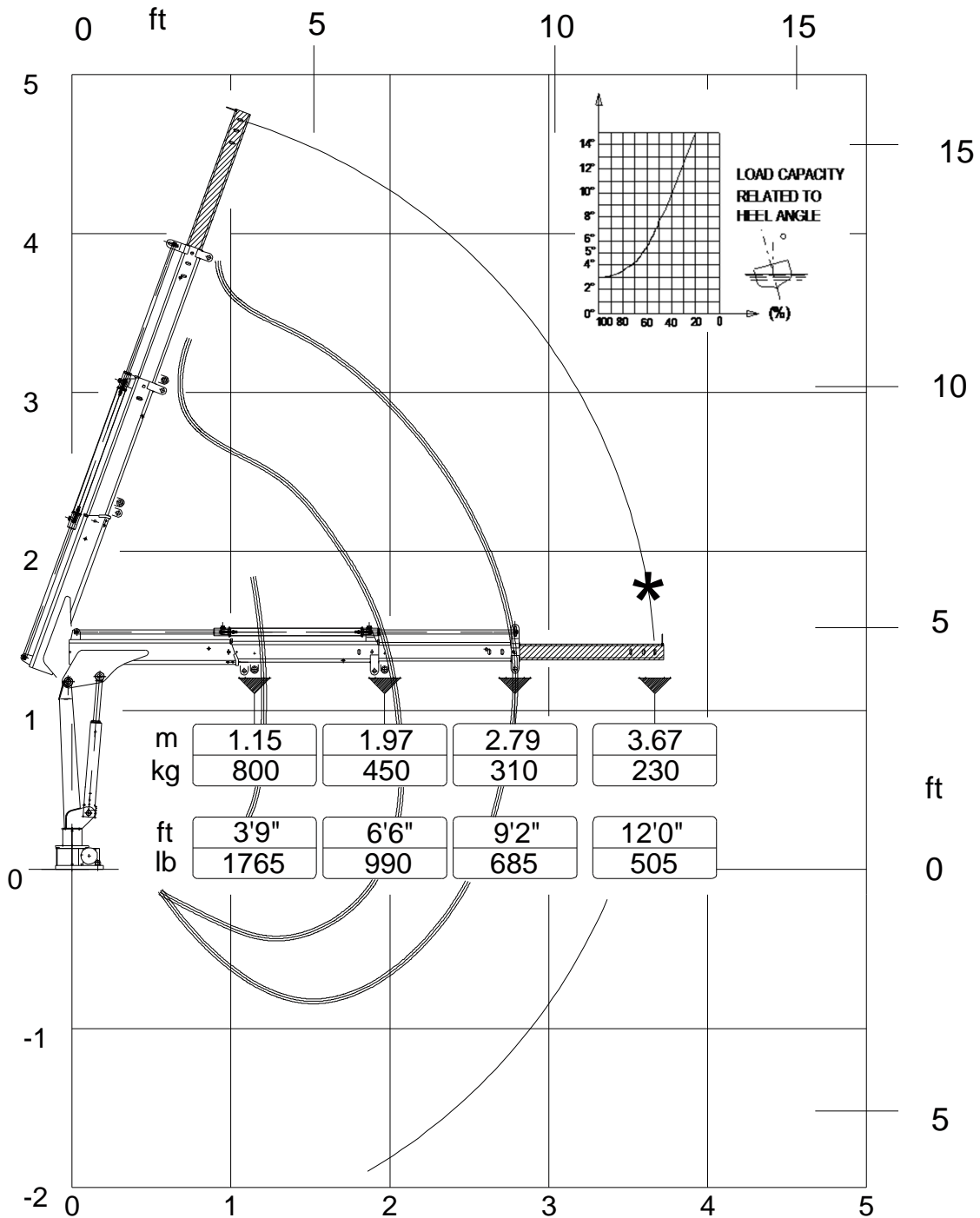
OVERALL DIMENSIONS 2S





*** OPTIONAL**



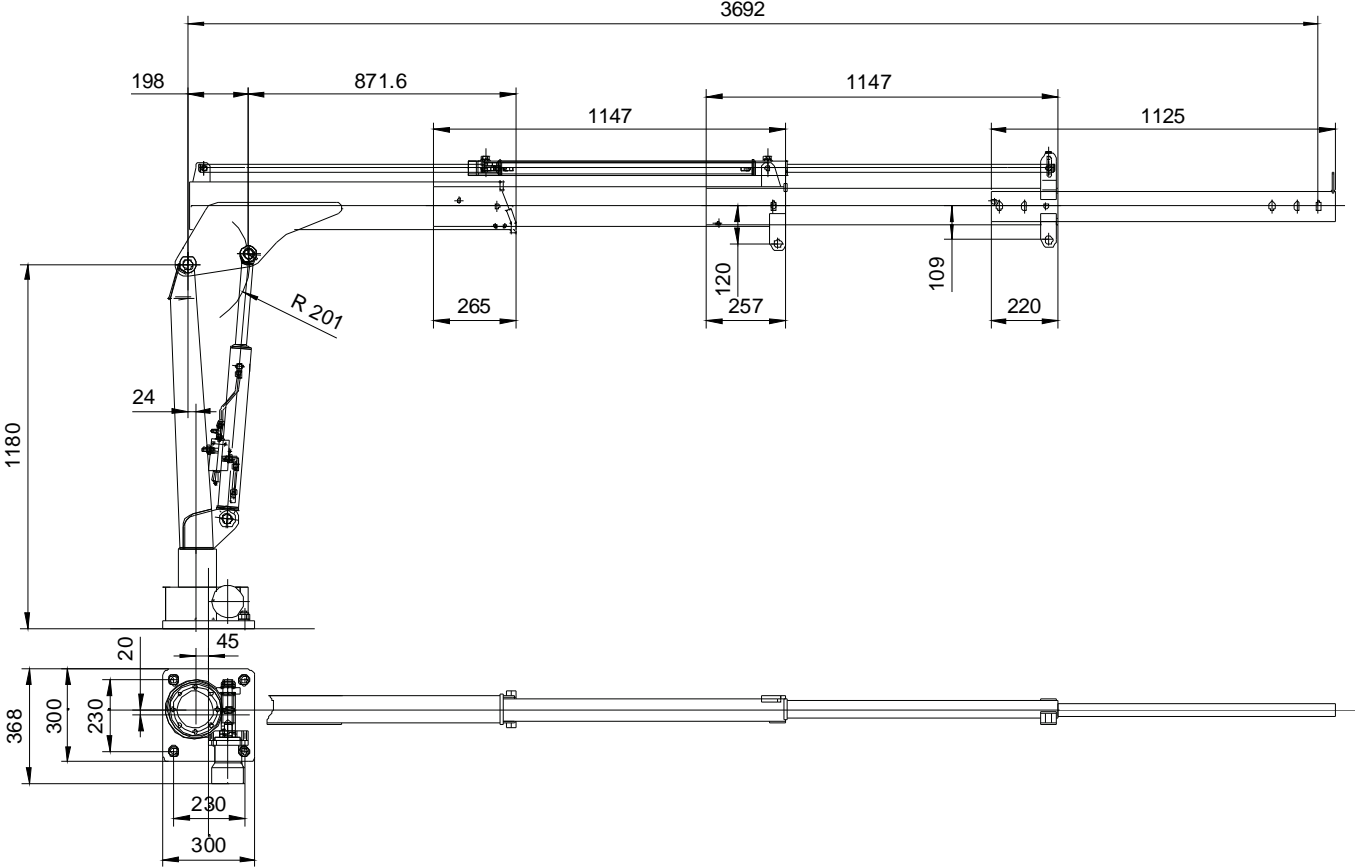


*** OPTIONAL**



601TM TECHNICAL SHEET

COLUMN - BOOM - DIMENSIONS



CYLINDERS AND PINS DIMENSIONS

LIFTING CYLINDER

<i>Cylinder bore</i>	65
<i>Cyl. ext. diameter</i>	75
<i>Rod diameter</i>	35
<i>Centers (open)</i>	1028
<i>Centers (closed)</i>	640
<i>Stroke</i>	388
<i>Artic. pin Ø</i>	30
<i>Pin material</i>	C40 NORM

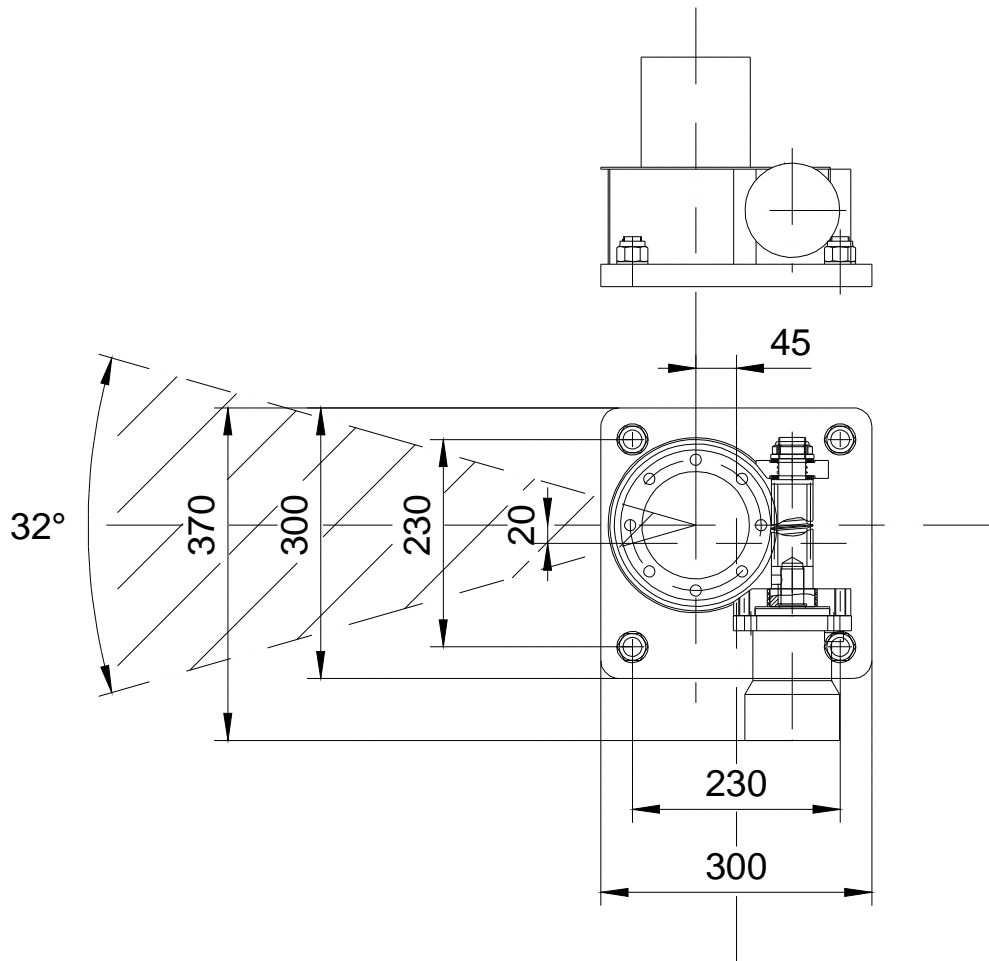
1ST - 2ND EXTENSION CYLINDER

<i>Cylinder bore</i>	40
<i>Cyl. ext. diameter</i>	50
<i>Rod diameter</i>	25
<i>Centers (open)</i>	1840
<i>Centers (closed)</i>	1020
<i>Stroke</i>	820
<i>Artic. pin Ø</i>	15
<i>Pin material</i>	39NiCrMo3 QT



601TM TECHNICAL SHEET

BASE DIMENSIONS TIE MOUNTING RODS

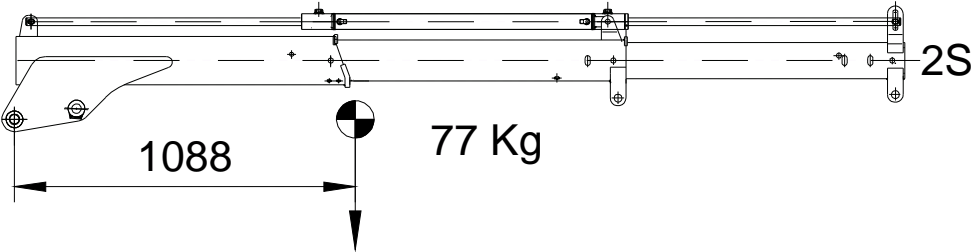
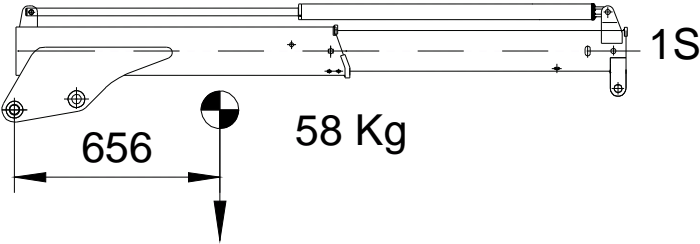


Fixing bolts	N°4 M20x1.5 cl. 10.9 L=70 (UNI 5931)
Tightening torque	240 Nm



601TM TECHNICAL SHEET

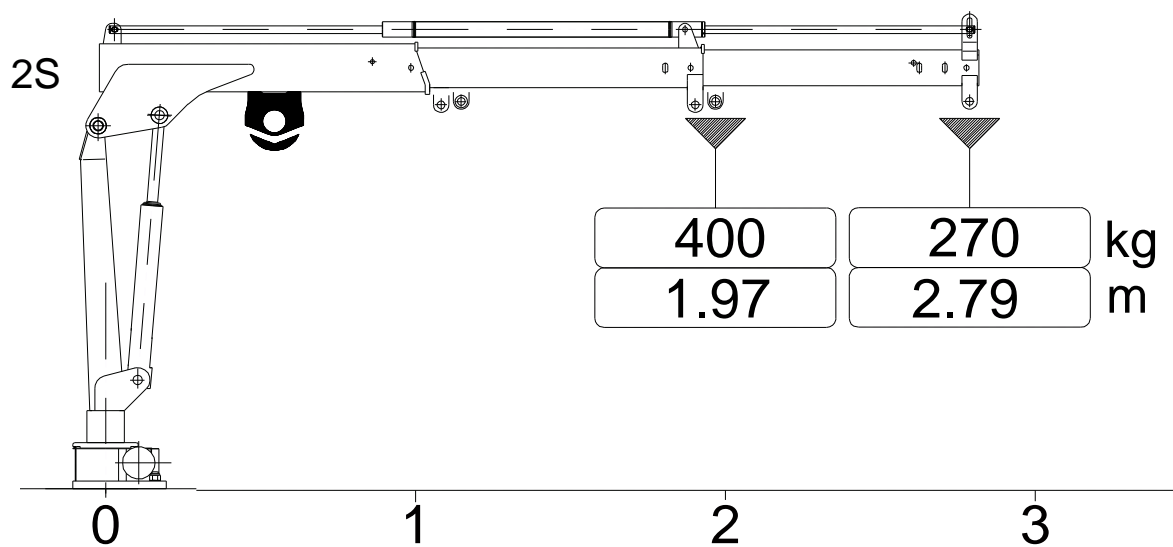
WEIGHTS - CENTERS OF GRAVITY



Fixed parts weight [kg]	87
-------------------------	----



HYDRAULIC WINCH DATA DATI DEL VERRICELLO



Max winch direct pull [kg]	400
----------------------------	-----