

# FIXED/MARINE MOUNTED CRANE 601TM



Max dynamic moment [daNm]	1154
---------------------------	------

	Version	Q <sub>max</sub>
Max capacity [kg]	1S	860
	2S	800

Crane weight [kg]	1S	145
	2S	164

Max working pressure	180 bar
Max oil flow to main relief valve	5 dm <sup>3</sup> /min
Oil tank capacity	17.5 dm <sup>3</sup>
Winch weight	45 kg
Slewing moment	170 daNm
Slewing angle	328°
Max working heel	3°
Absorbed power	1.5 kW 2 HP
Design standard	DIN 15018 EN 12999

### PTO Hydraulic crane versions

Distributor Pressure line = 3/8" P valve port - 9/16-18 Jic Fitting mounted
Distributor Tank line = 3/8" T valve port -3/4-16Jic Fitting mounted
Tank Suction line = 3/4" Plug mounted
Return Filter line = 3/8" filter port - 3/4-16 Jic Fitting mounted

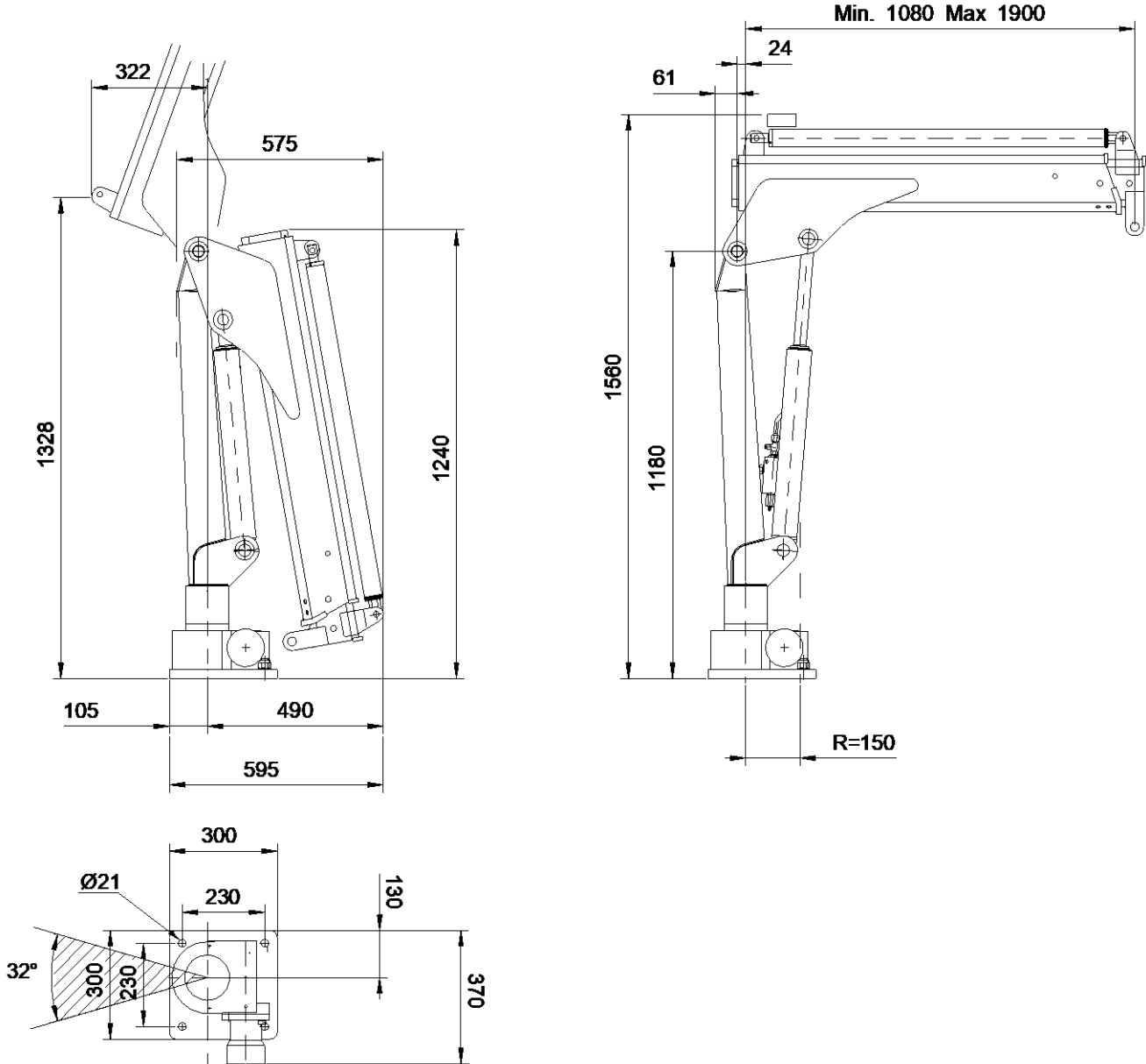
### ETR crane versions

Distributor Pressure line = 3/8" P valve port - 9/16-18 Jic Fitting mounted
Distributor Tank line = 3/8" T valve port -3/4-16Jic Fitting mounted
Power Pack Pressure line = 1/4" P port - 9/16-18 Jic Fitting mounted
Power Pack Tank line = 1/4" T port - 9/16-18 Jic Fitting mounted



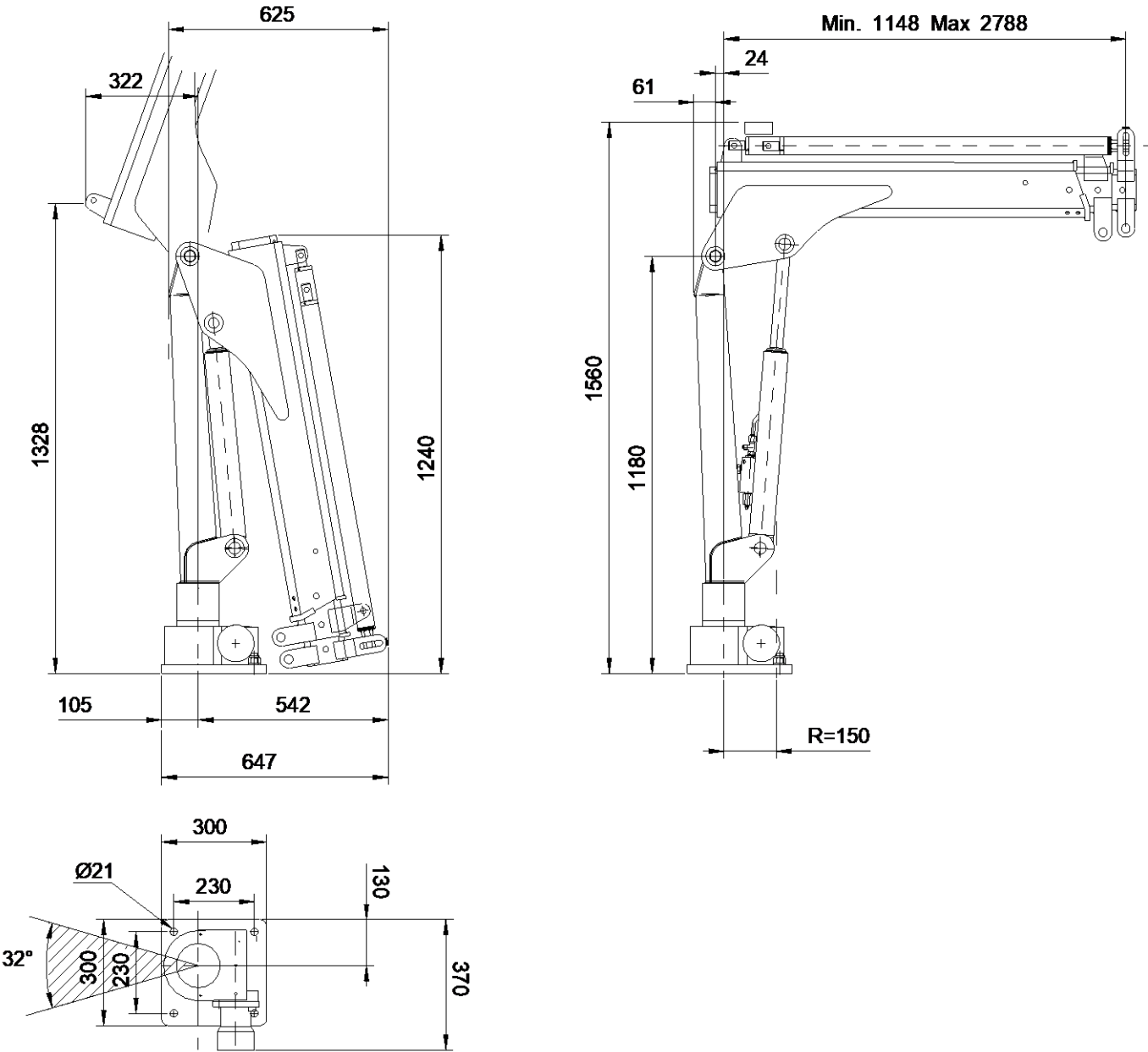
# 601TM TECHNICAL SHEET

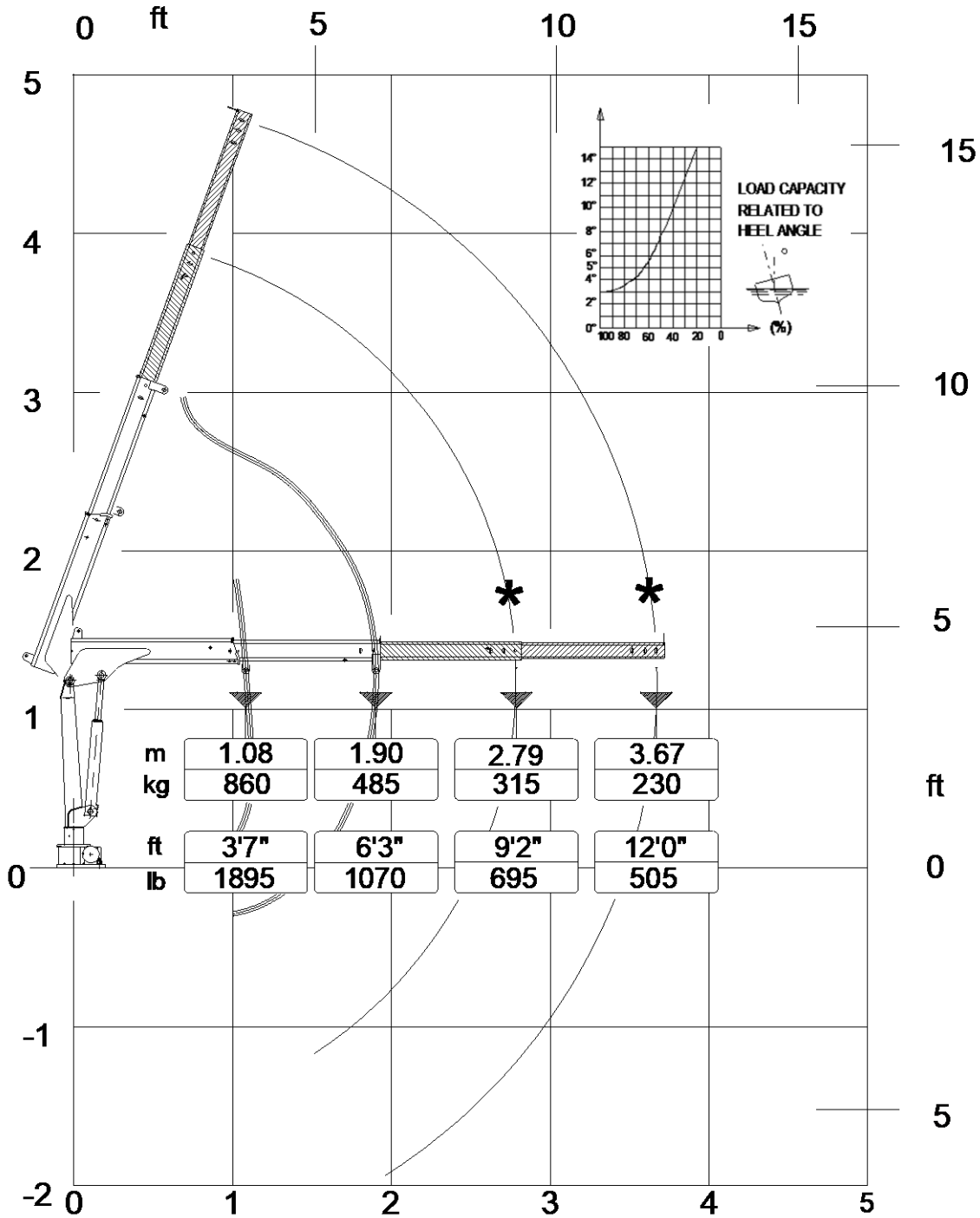
## OVERALL DIMENSIONS 1S



# 601TM TECHNICAL SHEET

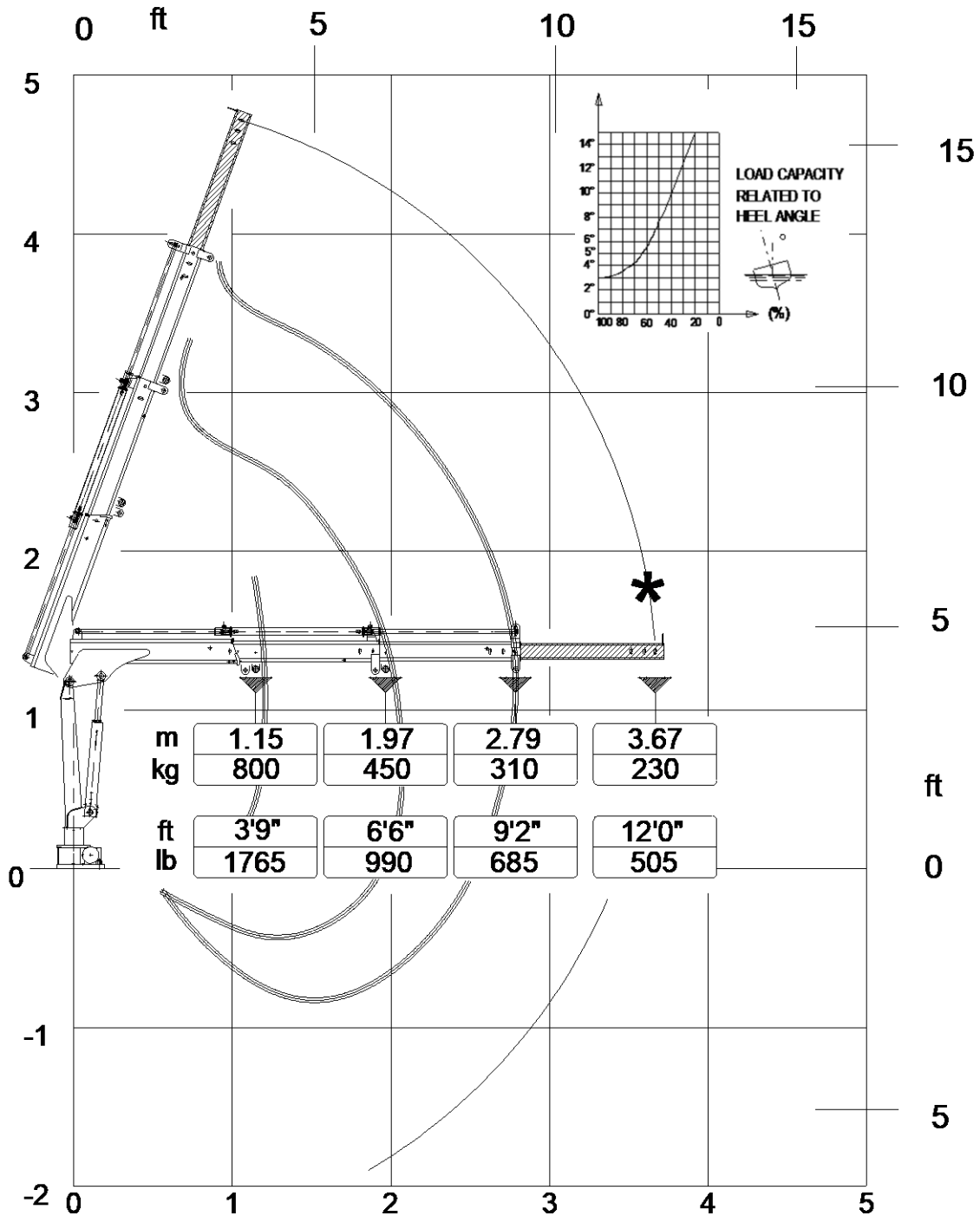
## OVERALL DIMENSIONS 2S





**\*OPTIONAL**



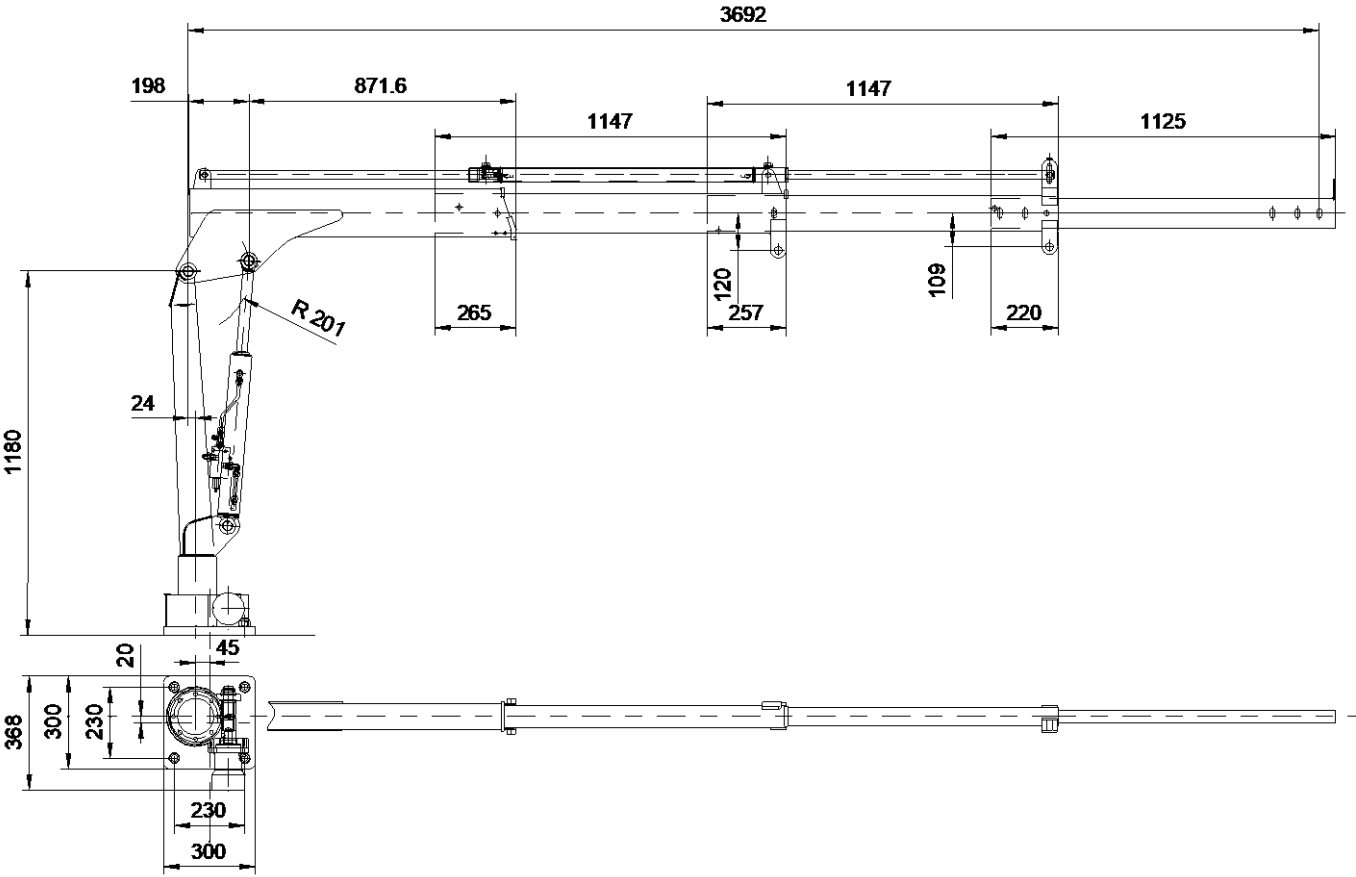


**\* OPTIONAL**



# 601TM TECHNICAL SHEET

## COLUMN - BOOM - DIMENSIONS



## CYLINDERS AND PINS DIMENSIONS

### LIFTING CYLINDER

<i>Cylinder bore</i>	65
<i>Cyl. ext. diameter</i>	75
<i>Rod diameter</i>	35
<i>Centers (open)</i>	1028
<i>Centers (closed)</i>	640
<i>Stroke</i>	388
<i>Artic. pin Ø</i>	30
<i>Pin material</i>	C40 NORM

### 1<sup>ST</sup> - 2<sup>ND</sup> EXTENSION CYLINDER

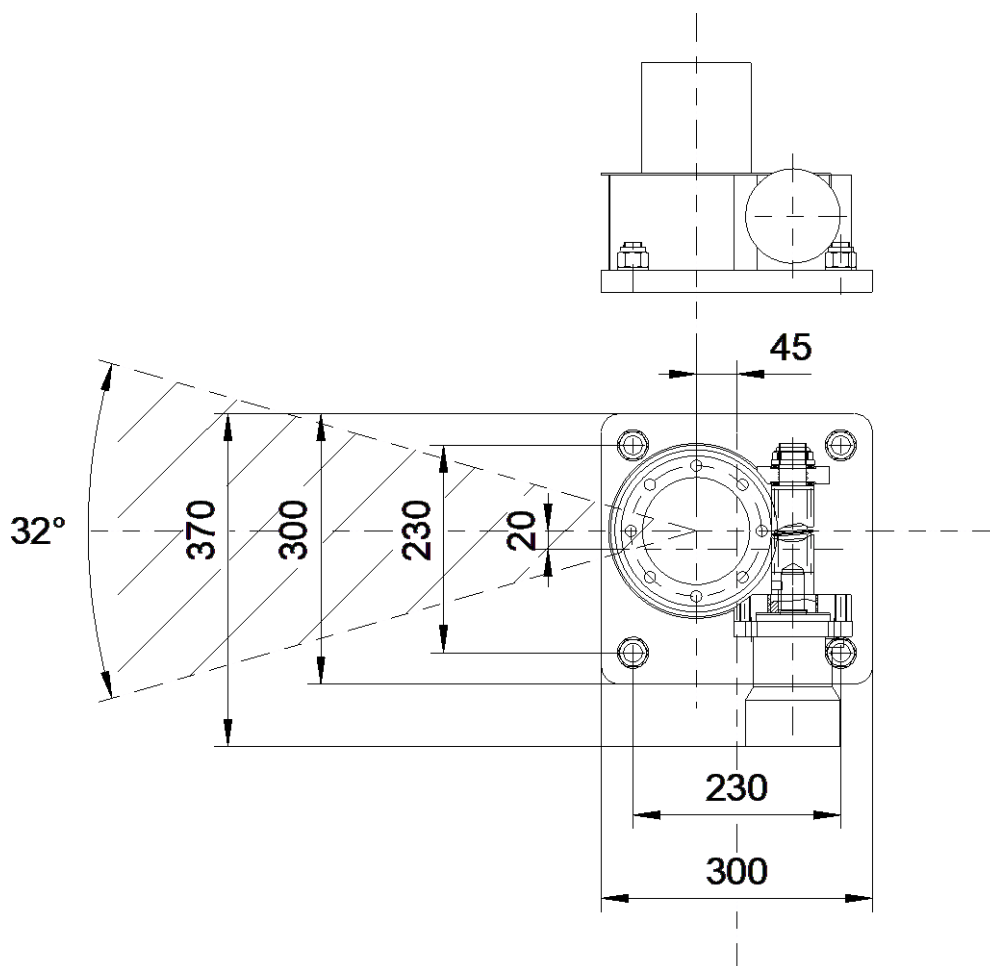
<i>Cylinder bore</i>	40
<i>Cyl. ext. diameter</i>	50
<i>Rod diameter</i>	25
<i>Centers (open)</i>	1840
<i>Centers (closed)</i>	1020
<i>Stroke</i>	820
<i>Artic. pin Ø</i>	15
<i>Pin material</i>	39NiCrMo3 QT





# 601TM TECHNICAL SHEET

## BASE DIMENSIONS TIE MOUNTING RODS

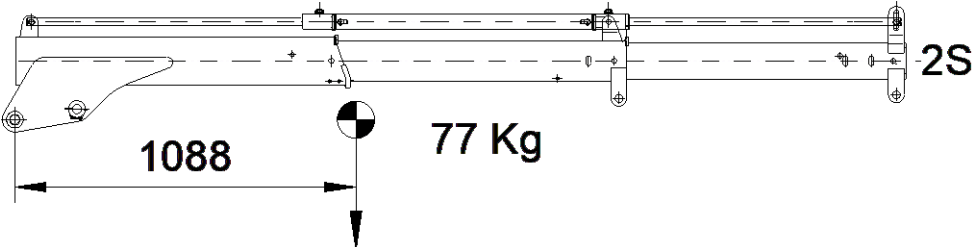
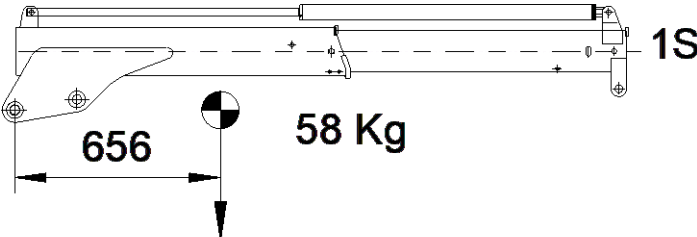


Fixing bolts	N°4 M20x1.5 cl. 10.9 L=70 (UNI 5931)
Tightening torque	240 Nm



# 601TM TECHNICAL SHEET

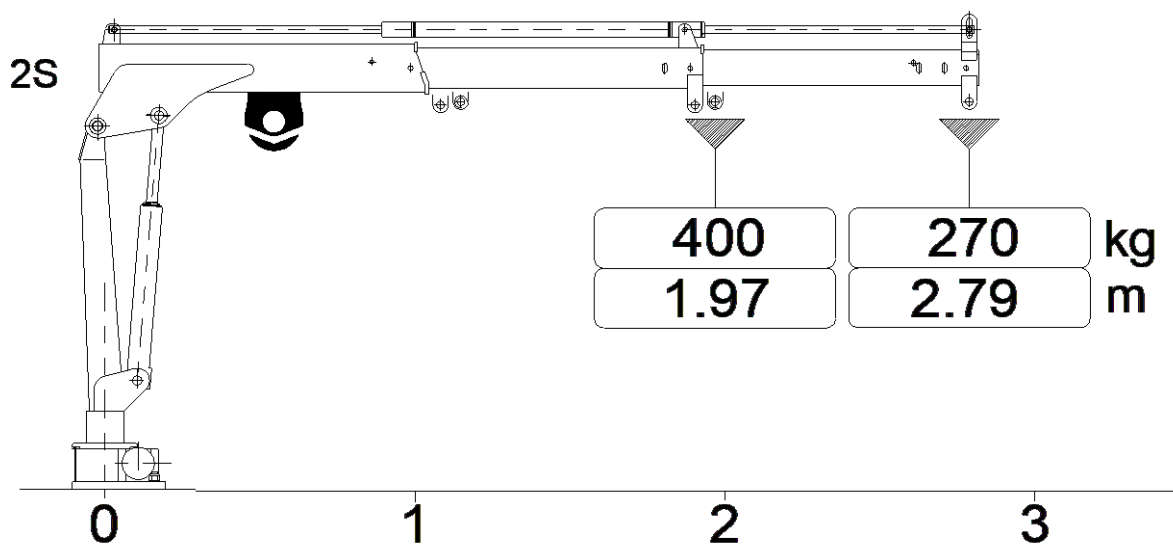
## WEIGHTS - CENTERS OF GRAVITY



Fixed parts weight [kg]	87
-------------------------	----



### HYDRAULIC WINCH DATA DATI DEL VERRICELLO



Max winch direct pull [kg]	400
----------------------------	-----

