

FIXED/MARINE MOUNTED CRANE 603TM



Max dynamic moment	2140 daNm
--------------------	-----------

Max capacity	1S	1590 kg
	2S	1485 kg
	3S	1270 kg

Crane weight	1S	216 kg
	2S	240 kg
	3S	262 kg

Max working pressure	1S-2S	160 bar
	3S	150 bar
Max oil flow to main relief valve	8 dm ³ /min	
Oil tank capacity	17.5 dm ³	
Winch weight	45 kg	
Slewing moment	350 daNm	
Max working heel	3°	
Slewing angle	335°	
Absorbed power	2.8 kW 3.8 HP	
Design standard	DIN 15018 EN 12999	

PTO Hydraulic crane versions

Distributor Pressure line = 3/8" P valve port - 9/16-18 Jic Fitting mounted
Distributor Tank line = 3/8" T valve port - 3/4-16 Jic Fitting mounted
Tank Suction line = 3/4" Plug mounted
Return Filter line = 3/8" filter port - 3/4-16 Jic Fitting mounted

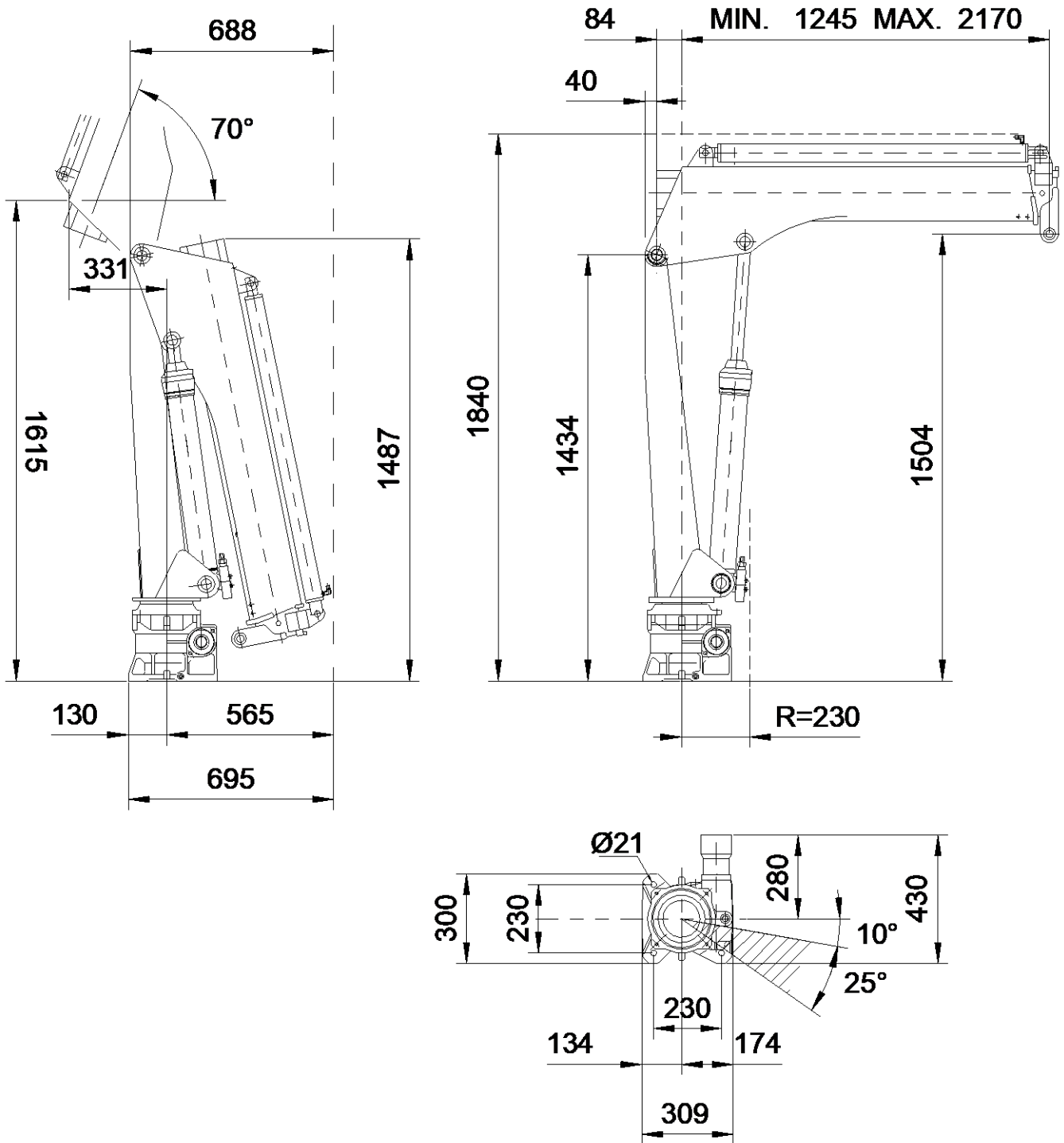
ETR crane versions

Distributor Pressure line = 3/8" P valve port - 9/16-18 Jic Fitting mounted
Distributor Tank line = 3/8" T valve port - 3/4-16 Jic Fitting mounted
Power Pack Pressure line = 1/4" P port - 9/16-18 Jic Fitting mounted
Power Pack Tank line = 1/4" T port - 9/16-18 Jic Fitting mounted



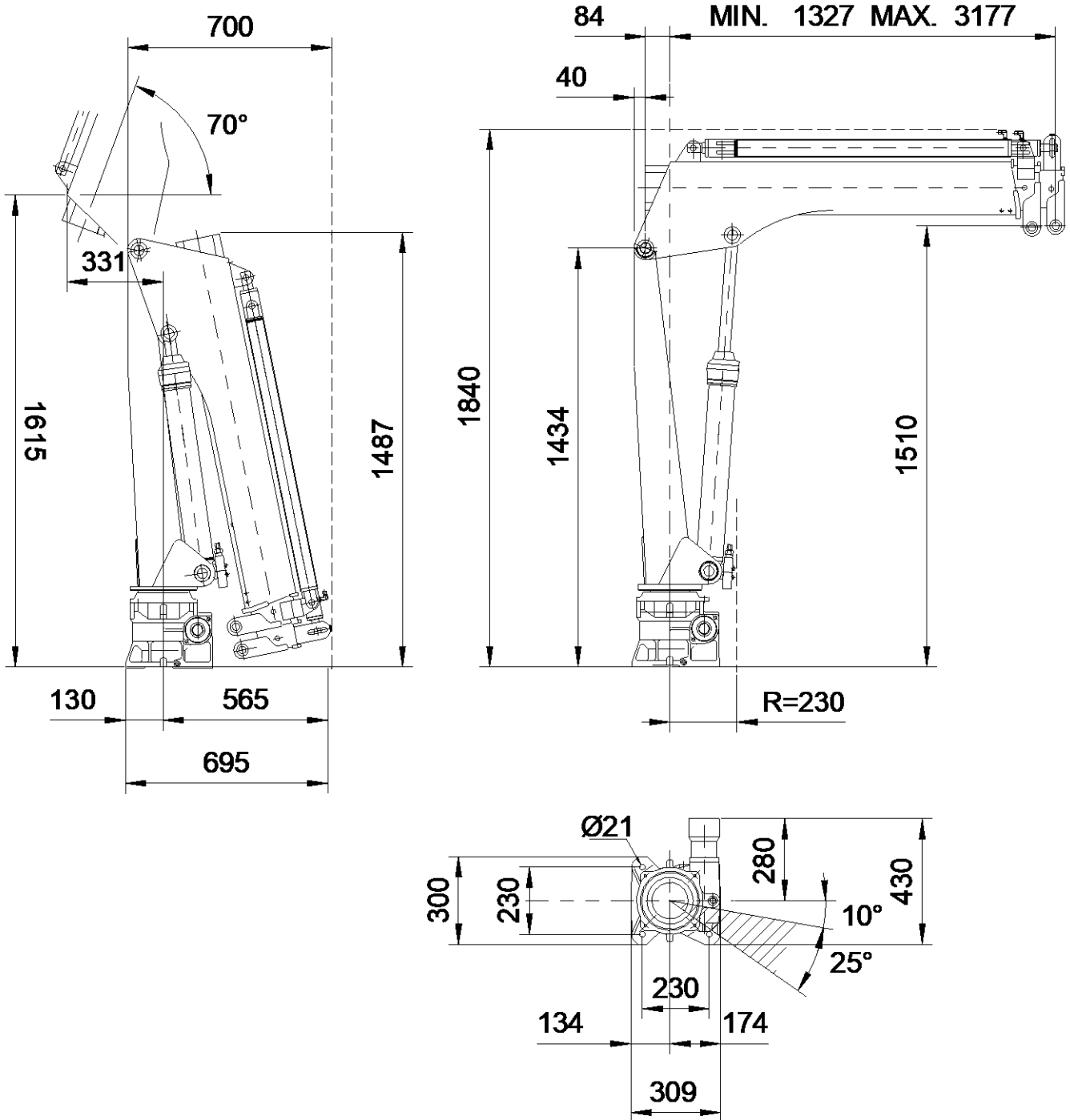
603TM TECHNICAL SHEET

OVERALL DIMENSIONS 1S



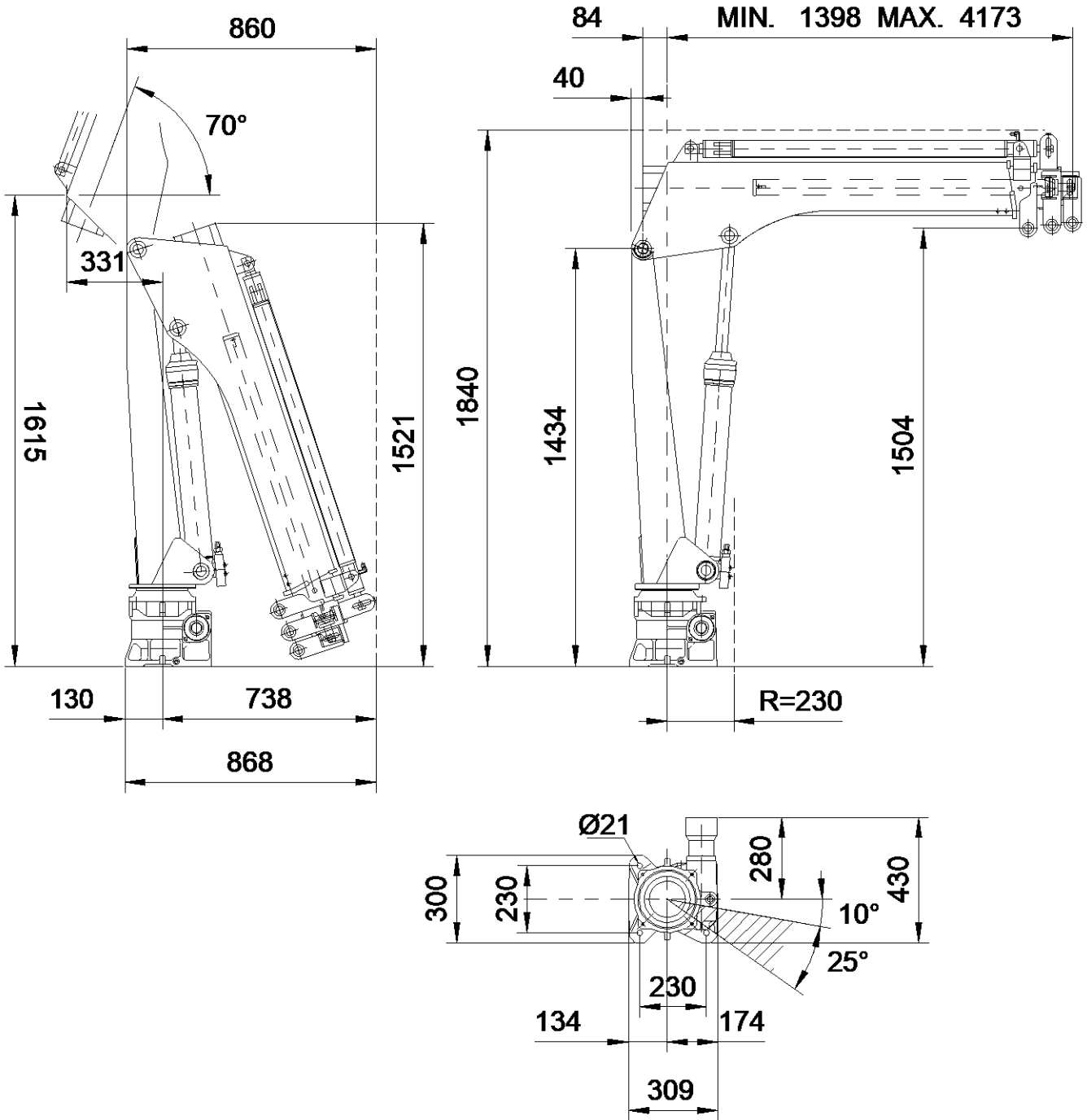
603TM TECHNICAL SHEET

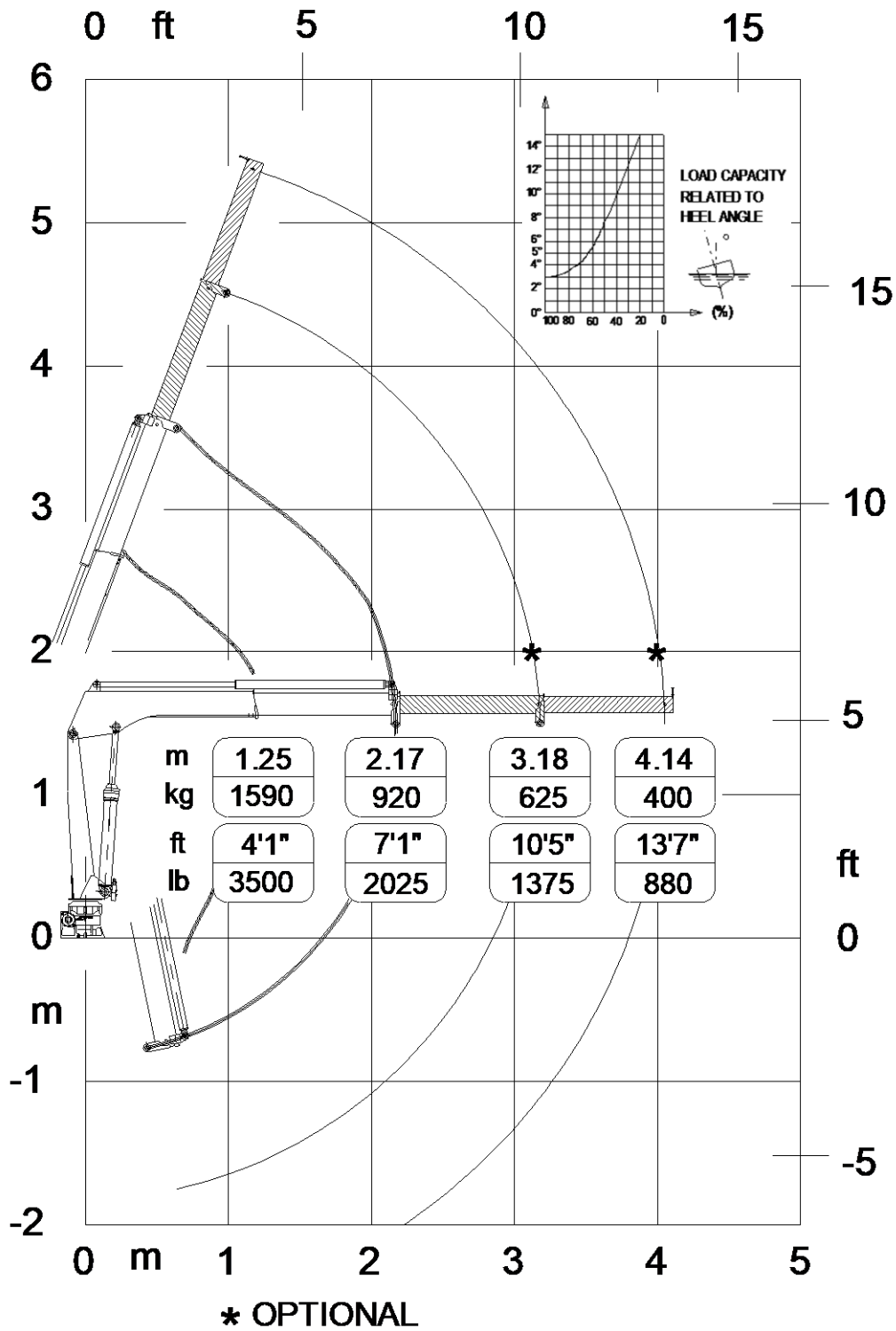
OVERALL DIMENSIONS 2S

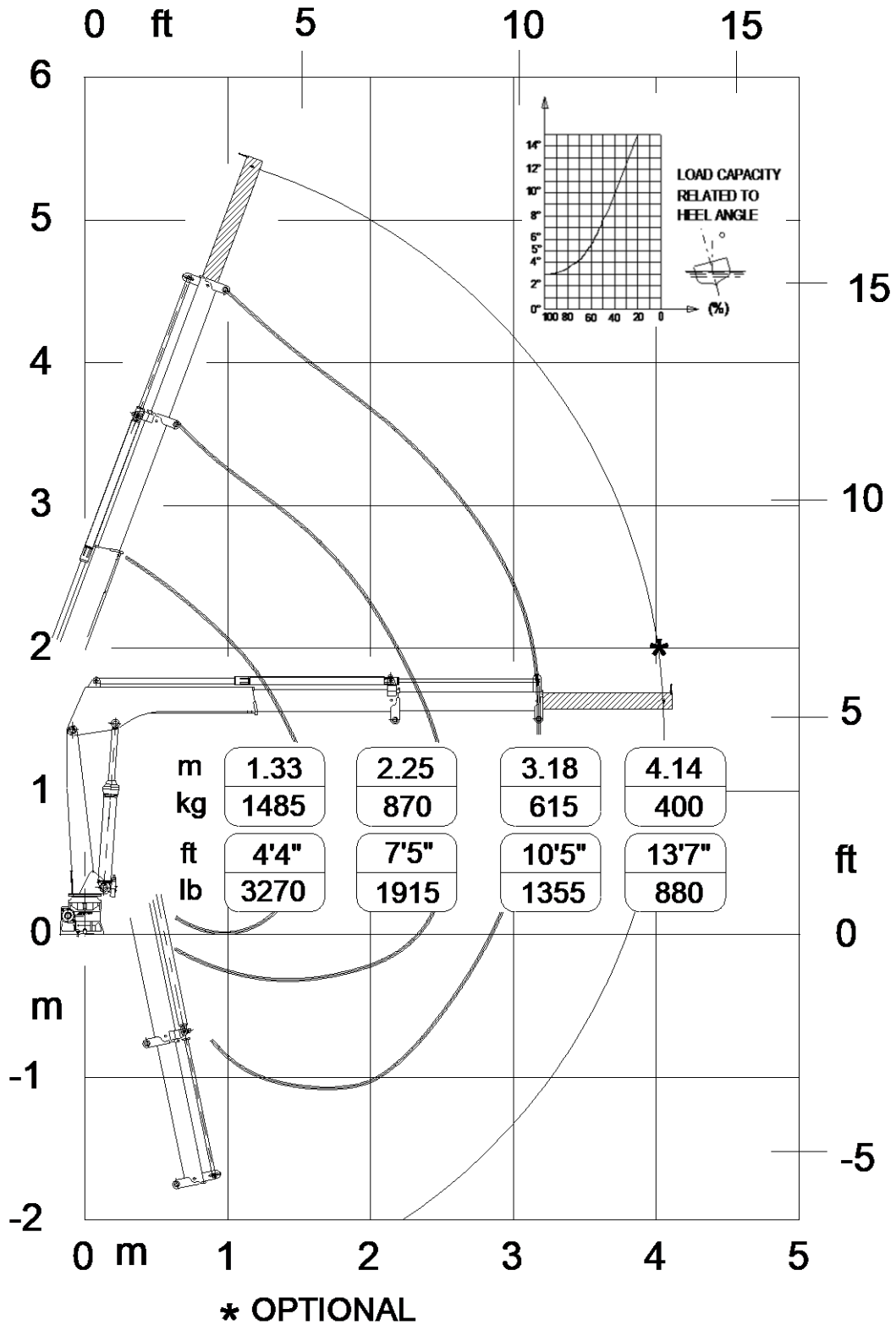


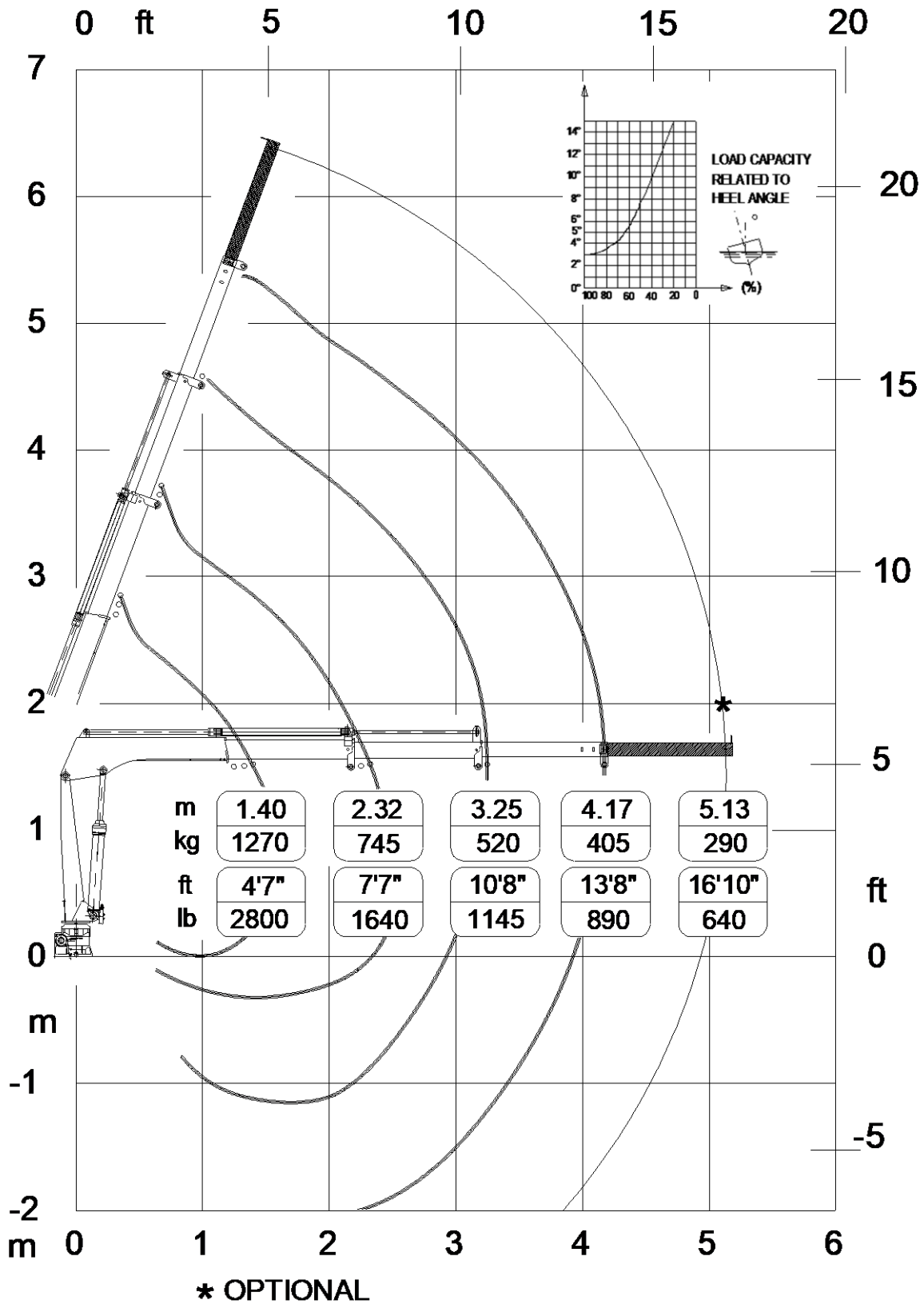
603TM TECHNICAL SHEET

OVERALL DIMENSIONS 3S









CYLINDERS AND PINS DIMENSIONS

LIFTING CYLINDER

<i>Cylinder bore</i>	80
<i>Cyl. ext. diameter</i>	90
<i>Rod diameter</i>	40
<i>Centers (open)</i>	1410
<i>Centers (closed)</i>	830
<i>Stroke</i>	580
<i>Artic. pin Ø</i>	40
<i>Pin material</i>	C40 NORM

1ST EXTENSION CYLINDER

<i>Cylinder bore</i>	50
<i>Cyl. ext. diameter</i>	60
<i>Rod diameter</i>	35
<i>Centers (open)</i>	2060
<i>Centers (closed)</i>	1135
<i>Stroke</i>	925
<i>Artic. pin Ø</i>	20
<i>Pin material</i>	C40 NORM

2ND EXTENSION CYLINDER

<i>Cylinder bore</i>	45
<i>Cyl. ext. diameter</i>	55
<i>Rod diameter</i>	25
<i>Centers (open)</i>	2065
<i>Centers (closed)</i>	1135
<i>Stroke</i>	925
<i>Artic. pin Ø</i>	15
<i>Pin material</i>	39NiCrMo3 QT

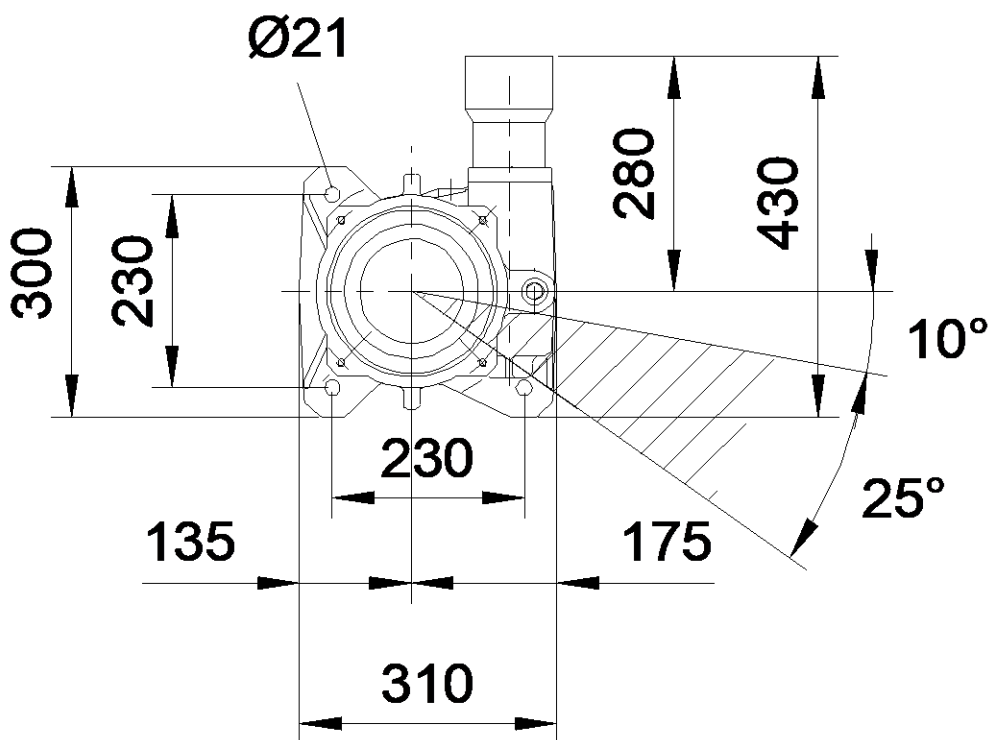
3RD EXTENSION CYLINDER

<i>Cylinder bore</i>	45
<i>Cyl. ext. diameter</i>	55
<i>Rod diameter</i>	25
<i>Centers (open)</i>	996.5
<i>Centers (closed)</i>	71.5
<i>Stroke</i>	925
<i>Artic. pin Ø</i>	15
<i>Pin material</i>	39NiCrMo3 QT



603TM TECHNICAL SHEET

BASE DIMENSIONS TIE MOUNTING RODS

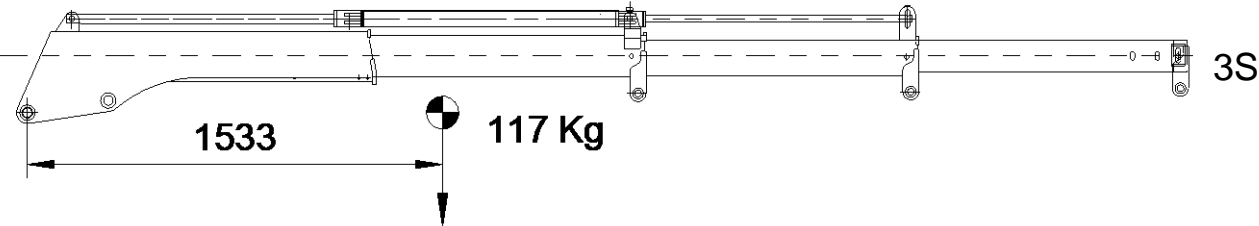
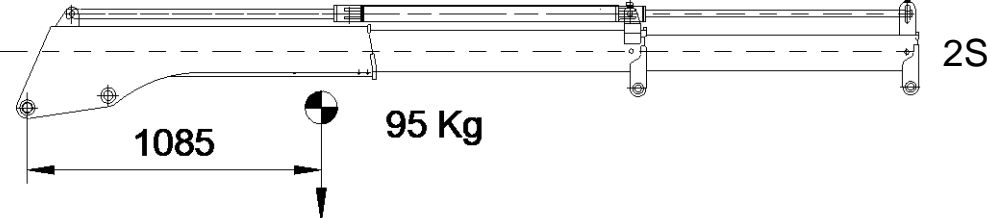
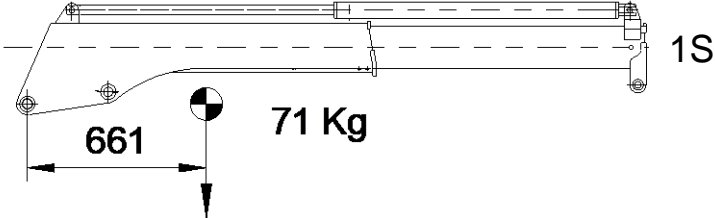


Fixing bolts	N°4 M20x1.5 L=70 10.9 UNI 5931	Tightening torque	240 Nm
--------------	-----------------------------------	-------------------	--------



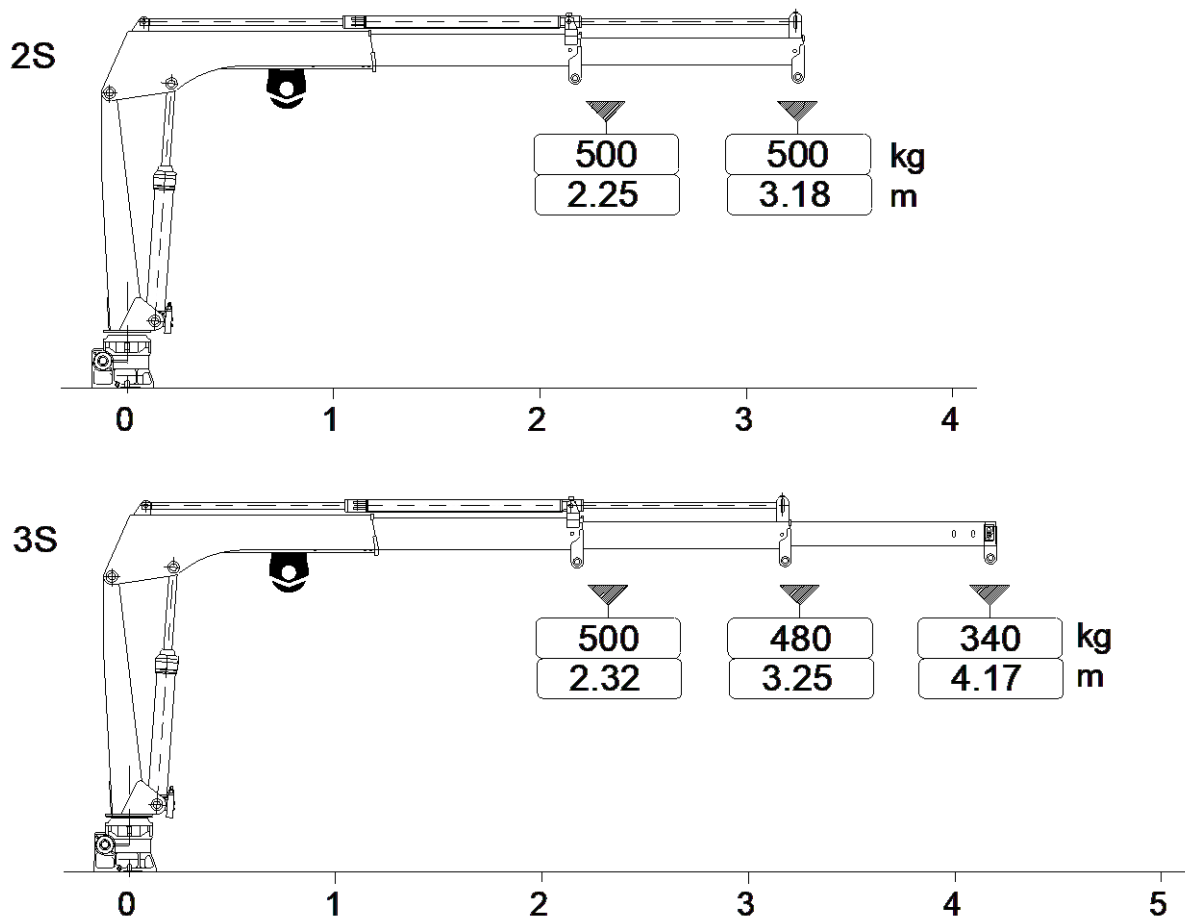
603TM TECHNICAL SHEET

WEIGHTS - CENTERS OF GRAVITY



Fixed parts weight [kg]	145
-------------------------	-----

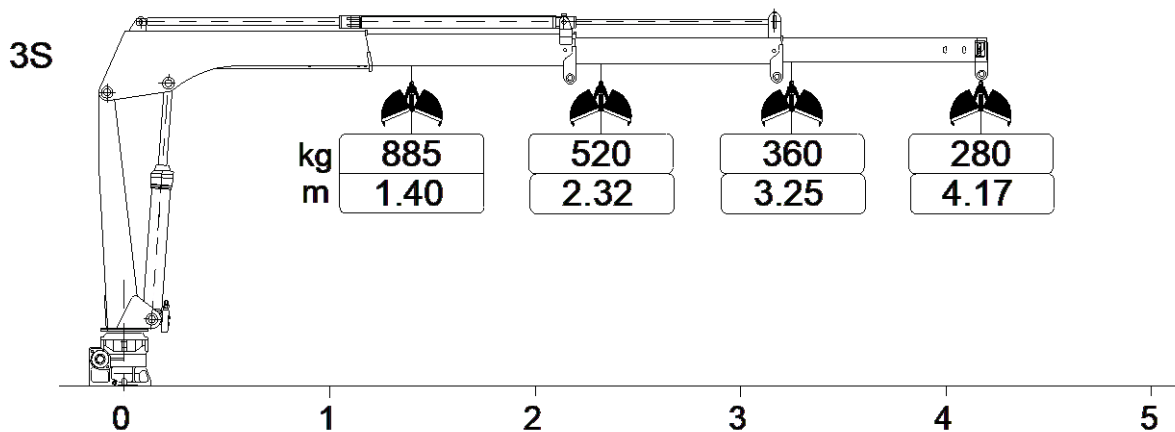
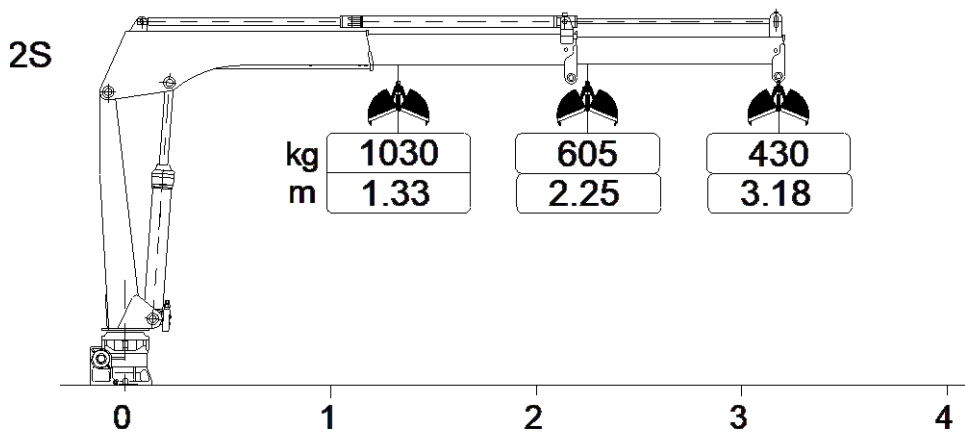
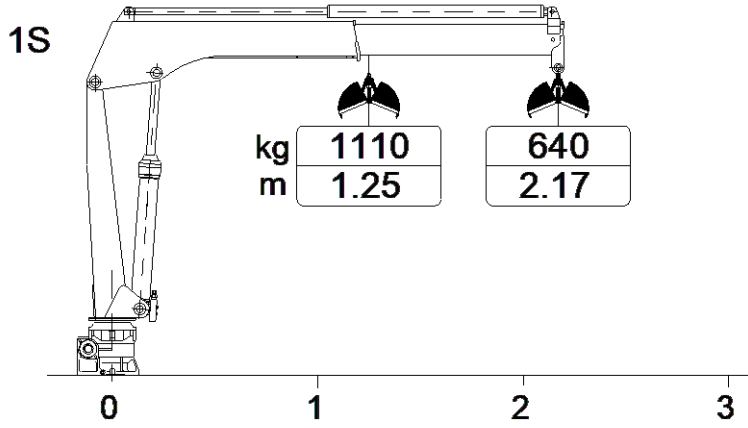




GRU CRANE 2S - 3S

Max winch direct pull [kg]	500
----------------------------	-----





Max allowable weight	70 kg
Max working pressure	130 bar

