

# FIXED/MARINE MOUNTED CRANE 604TM



Max dynamic moment [daNm]	3290
---------------------------	------

Max capacity [kg]	Version	Q <sub>max</sub>
	1S	2055
	2S	1935
	3S	1830

Crane weight [kg] (Hydraulic version)	Version	WITHOUT OPTIONALS
	1S	263
	2S	295
	3S	321

Max working pressure	160 bar
Max oil flow to main relief valve	10 l/min
Oil tank capacity	17.5 l
Slewing moment	450 daNm
Slewing angle	335°
Max working heel	3°
Absorbed power	3.5 kW 4.6 HP
Design standard	DIN 15018 EN 12999

### PTO Hydraulic crane versions

Distributor Pressure line = 3/8" P valve port - 9/16-18 Jic Fitting mounted
Distributor Tank line = 3/8" T valve port -3/4-16Jic Fitting mounted
Tank Suction line = 3/4" Plug mounted
Return Filter line = 3/8" filter port - 3/4-16 Jic Fitting mounted

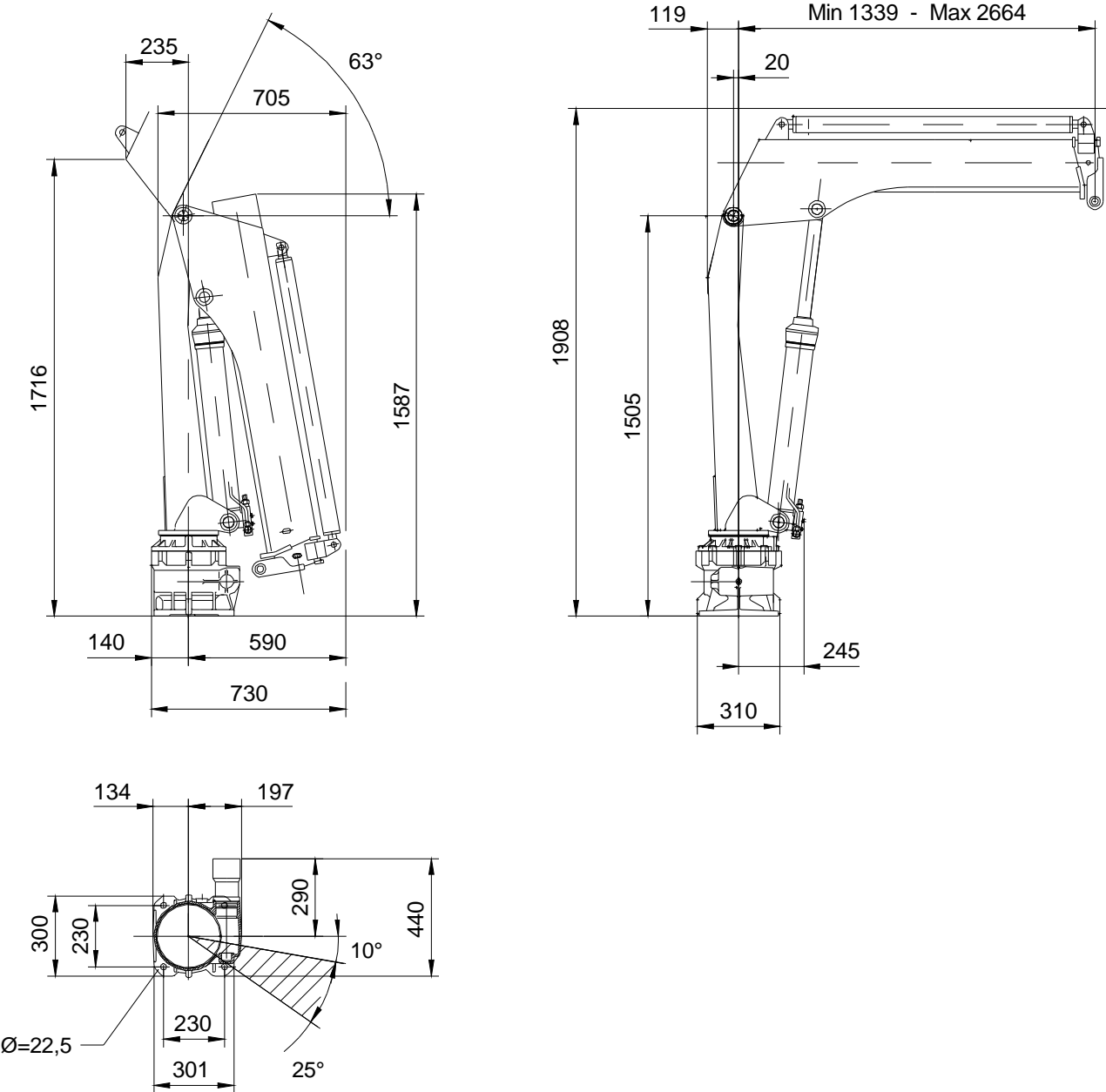
### ETR crane versions (NOT RECOMENDED IN MARINE ENVIROMENT)

Distributor Pressure line = 3/8" P valve port - 9/16-18 Jic Fitting mounted
Distributor Tank line = 3/8" T valve port -3/4-16Jic Fitting mounted
Power Pack Pressure line = 1/4" P port - 9/16-18 Jic Fitting mounted
Power Pack Tank line = 1/4" T port - 9/16-18 Jic Fitting mounted



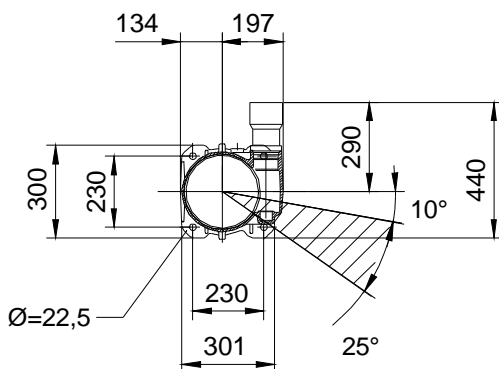
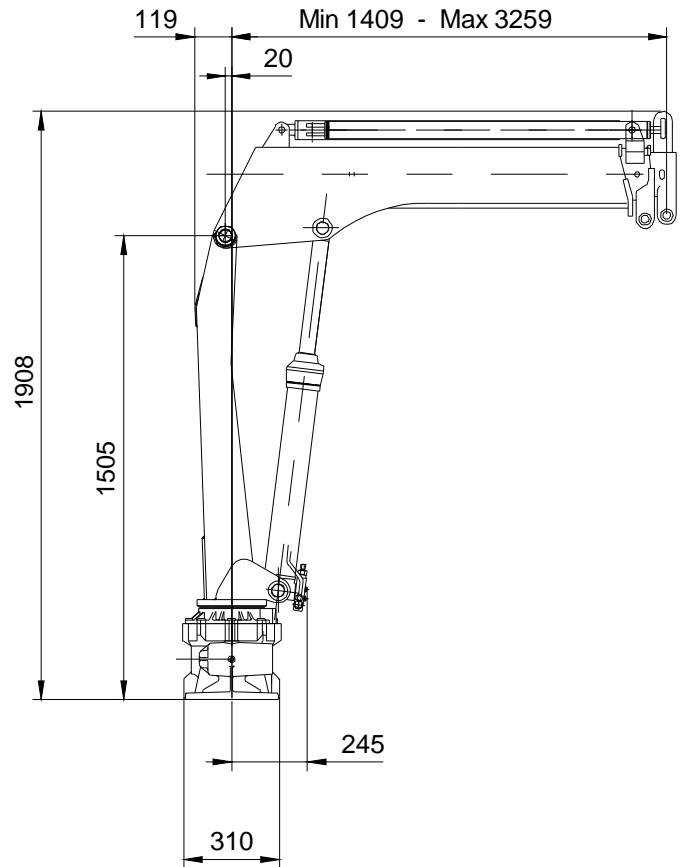
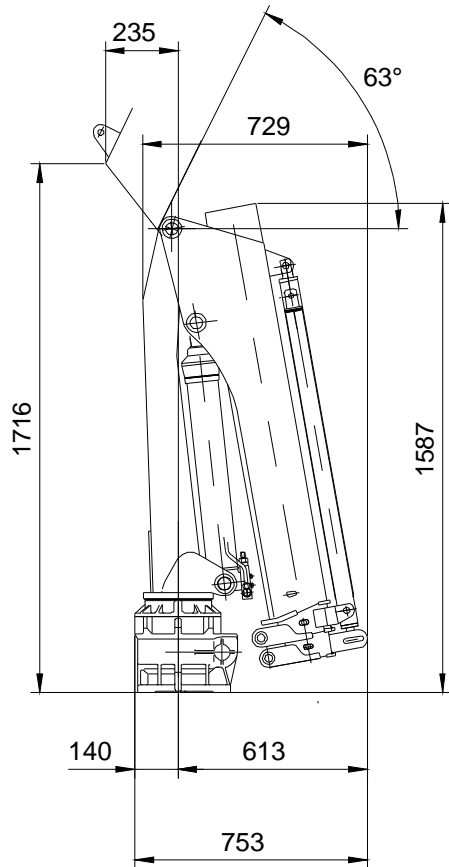
# 604TM TECHNICAL SHEET

## OVERALL DIMENSIONS 1S



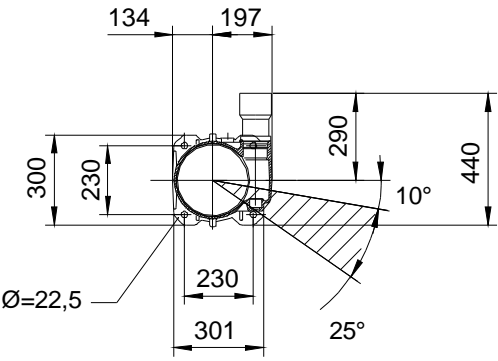
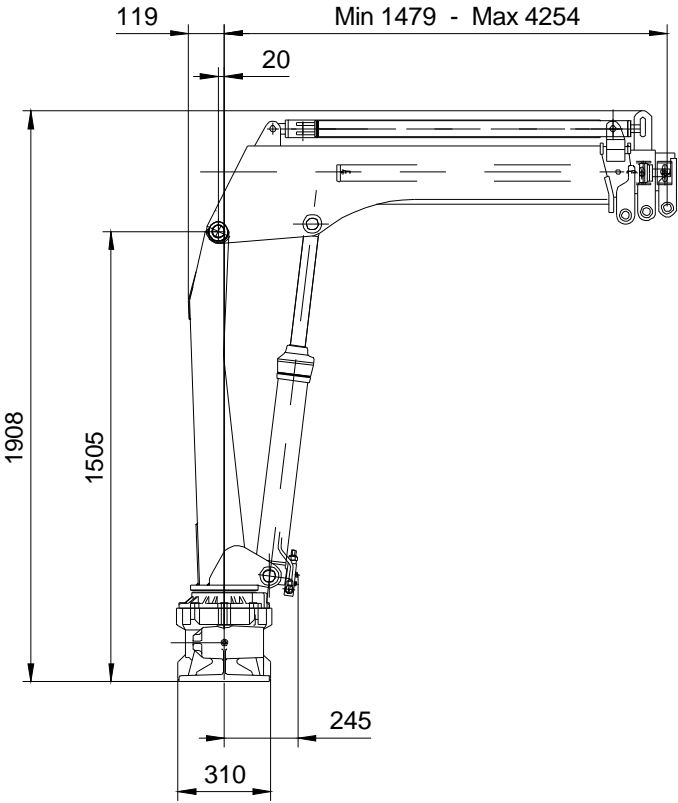
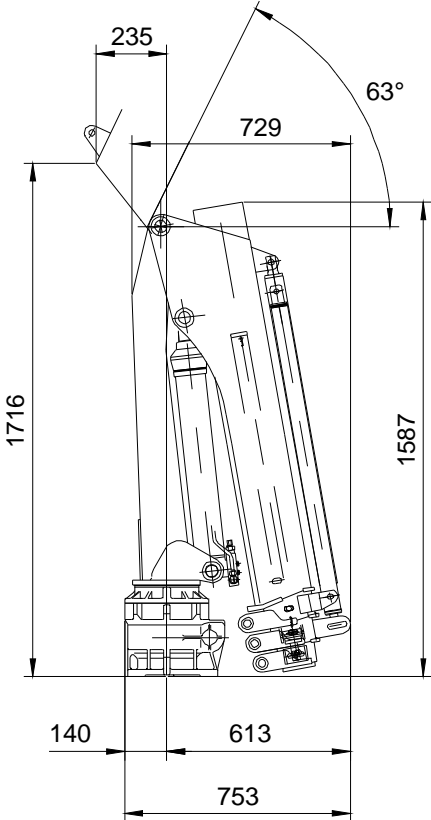
# 604TM TECHNICAL SHEET

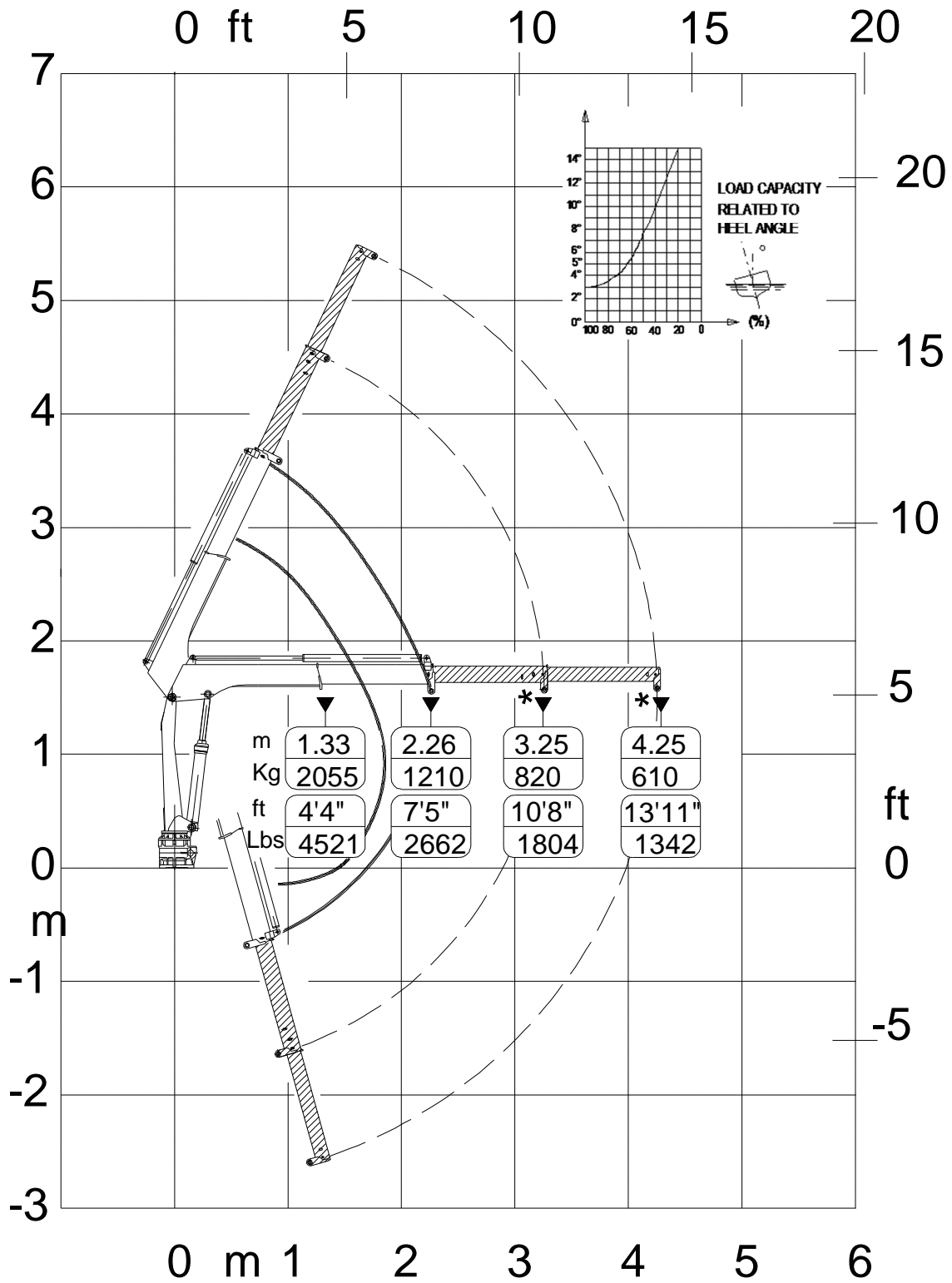
## OVERALL DIMENSIONS 2S



# 604TM TECHNICAL SHEET

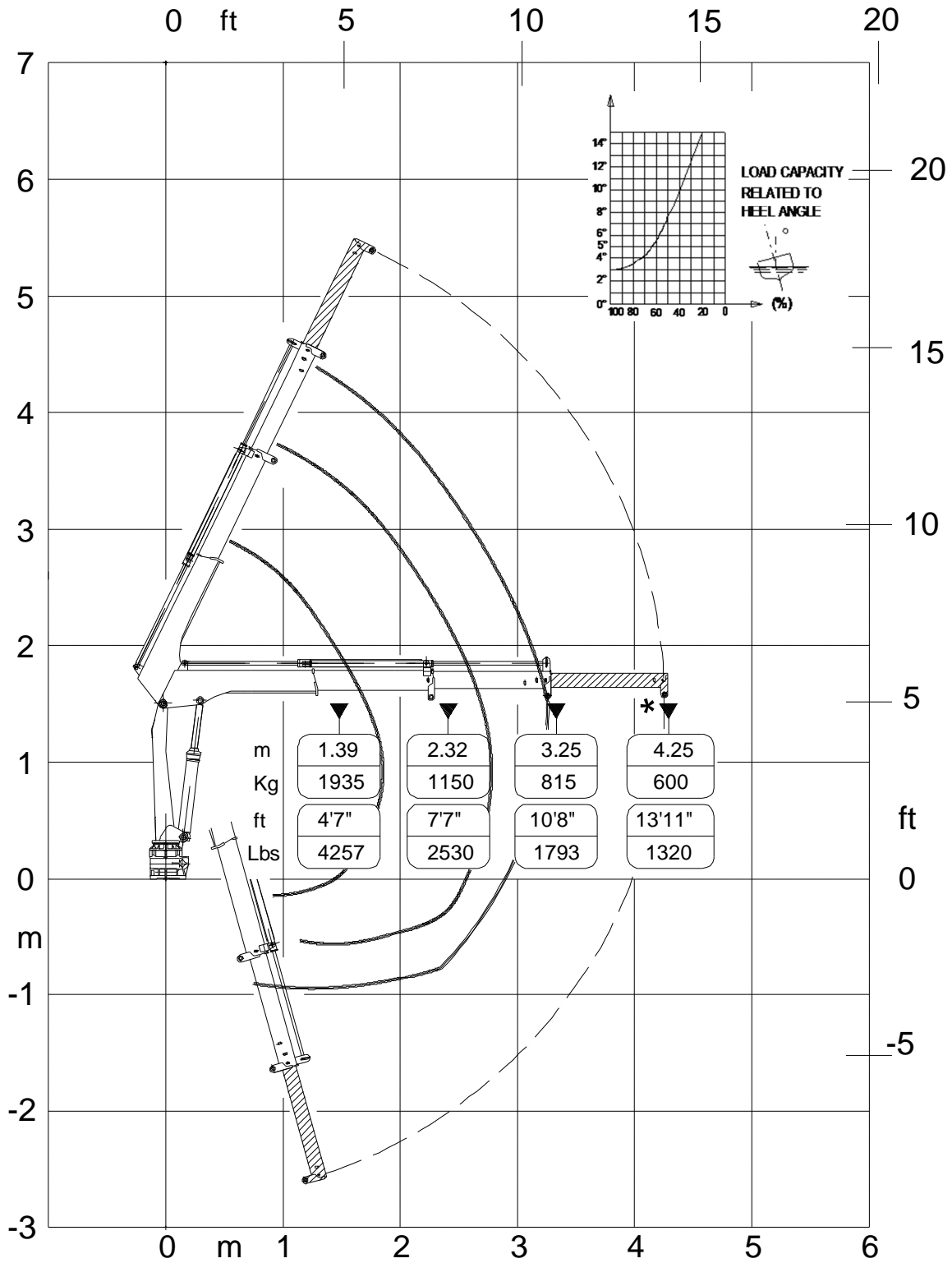
## OVERALL DIMENSIONS 3S





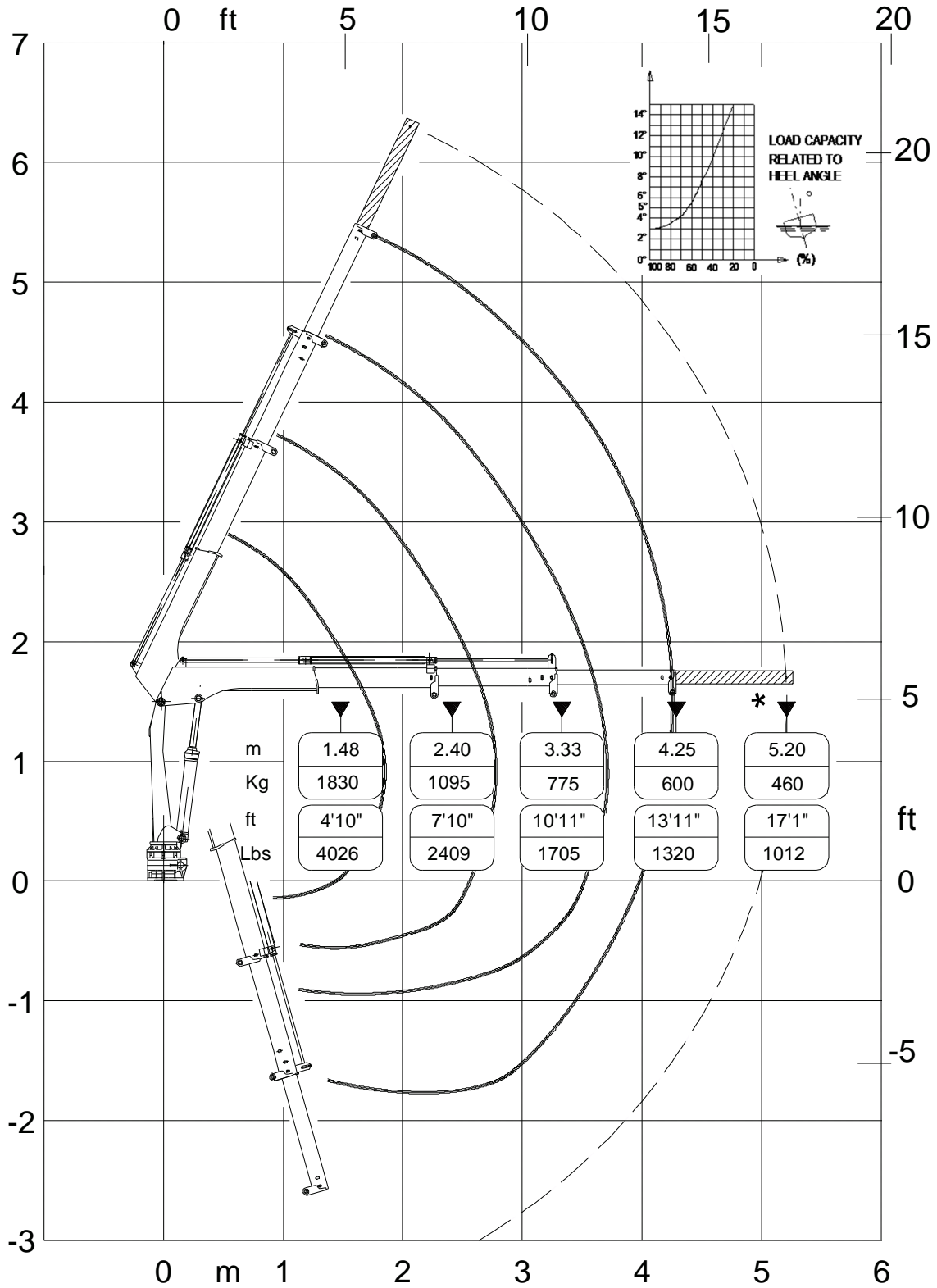
(\*) Manual extensions (optional): these cannot lift additional hydraulic tools





(\*) Manual extensions (optional): these cannot lift additional hydraulic tools





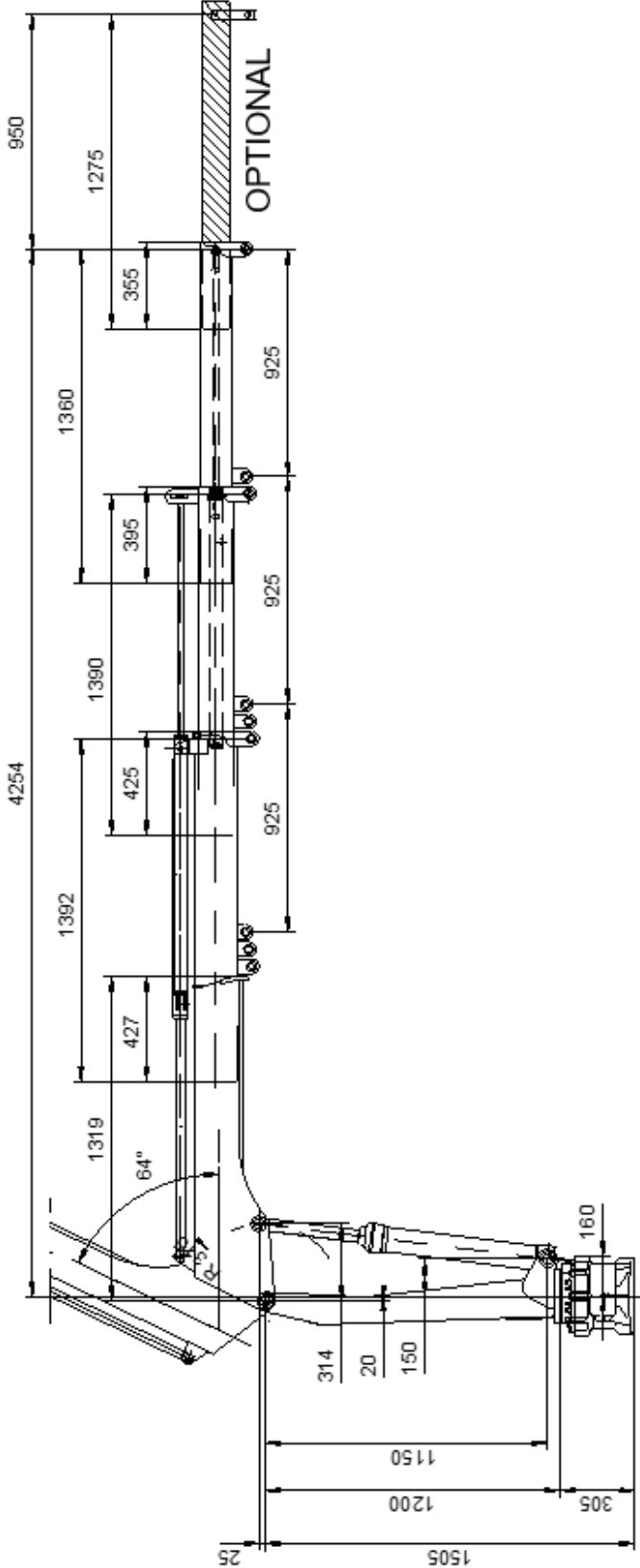
(\*) Manual extensions (optional): these cannot lift additional hydraulic tools





# 604TM TECHNICAL SHEET

## COLUMN - BOOM - DIMENSIONS



## CYLINDERS AND PINS DIMENSIONS

### LIFTING CYLINDER

Alesaggio <i>Cylinder bore</i>	90
Diametro esterno <i>Cyl. ext. diameter</i>	100
Diametro stelo <i>Rod diameter</i>	50
Interasse aperto <i>Centers (open)</i>	1445
Interasse chiuso <i>Centers (closed)</i>	850
Corsa <i>Stroke</i>	595
Artic. <i>pin</i> Ø	40
Pin material	C40 NORM

### CILINDRO 1° SFILO

#### 1<sup>ST</sup> EXTENSION CYLINDER

Alesaggio <i>Cylinder bore</i>	50
Diametro esterno <i>Cyl. ext. diameter</i>	60
Diametro stelo <i>Rod diameter</i>	35
Interasse aperto <i>Centers (open)</i>	2060
Interasse chiuso <i>Centers (closed)</i>	1135
Corsa <i>Stroke</i>	925
Artic. <i>pin</i> Ø	20
Pin material	C40 NORM

### CILINDRO 2° SFILO

#### 2<sup>ND</sup> EXTENSION CYLINDER

Alesaggio <i>Cylinder bore</i>	45
Diametro esterno <i>Cyl. ext. diameter</i>	55
Diametro stelo <i>Rod diameter</i>	25
Interasse aperto <i>Centers (open)</i>	2060
Interasse chiuso <i>Centers (closed)</i>	1135
Corsa <i>Stroke</i>	925
Ø perni articolazione <i>Artic. pin</i> Ø	15
Materiale perno <i>Pin material</i>	39NiCrMo3 QT

### CILINDRO 3° SFILO

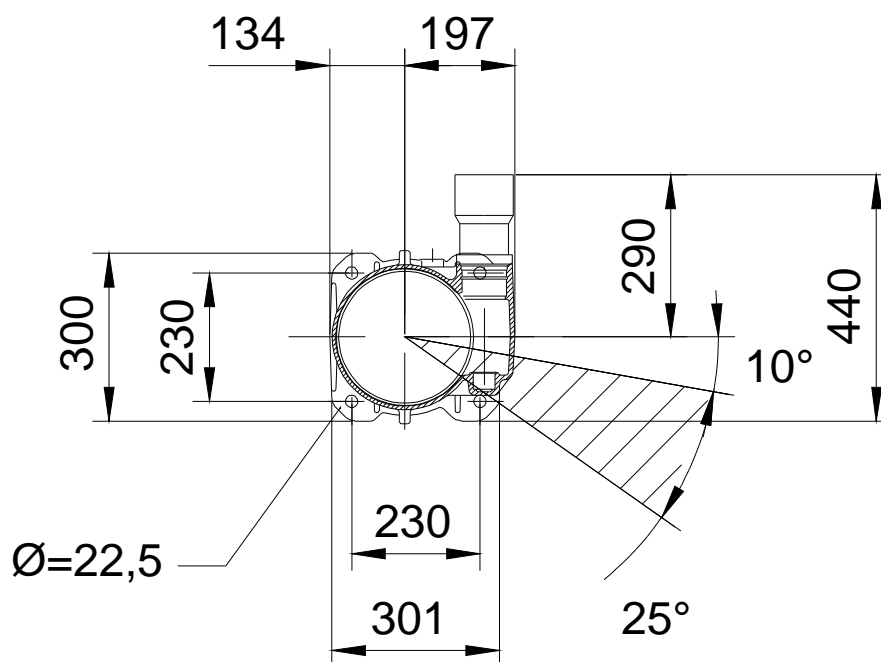
#### 3<sup>RD</sup> EXTENSION CYLINDER

Alesaggio <i>Cylinder bore</i>	45
Diametro esterno <i>Cyl. ext. diameter</i>	55
Diametro stelo <i>Rod diameter</i>	25
Interasse aperto <i>Centers (open)</i>	996.5
Interasse chiuso <i>Centers (closed)</i>	71.5
Corsa <i>Stroke</i>	925
Ø perni articolazione <i>Artic. pin</i> Ø	15
Materiale perno <i>Pin material</i>	39NiCrMo3 QT



# 604TM TECHNICAL SHEET

## BASE DIMENSIONS TIE MOUNTING RODS

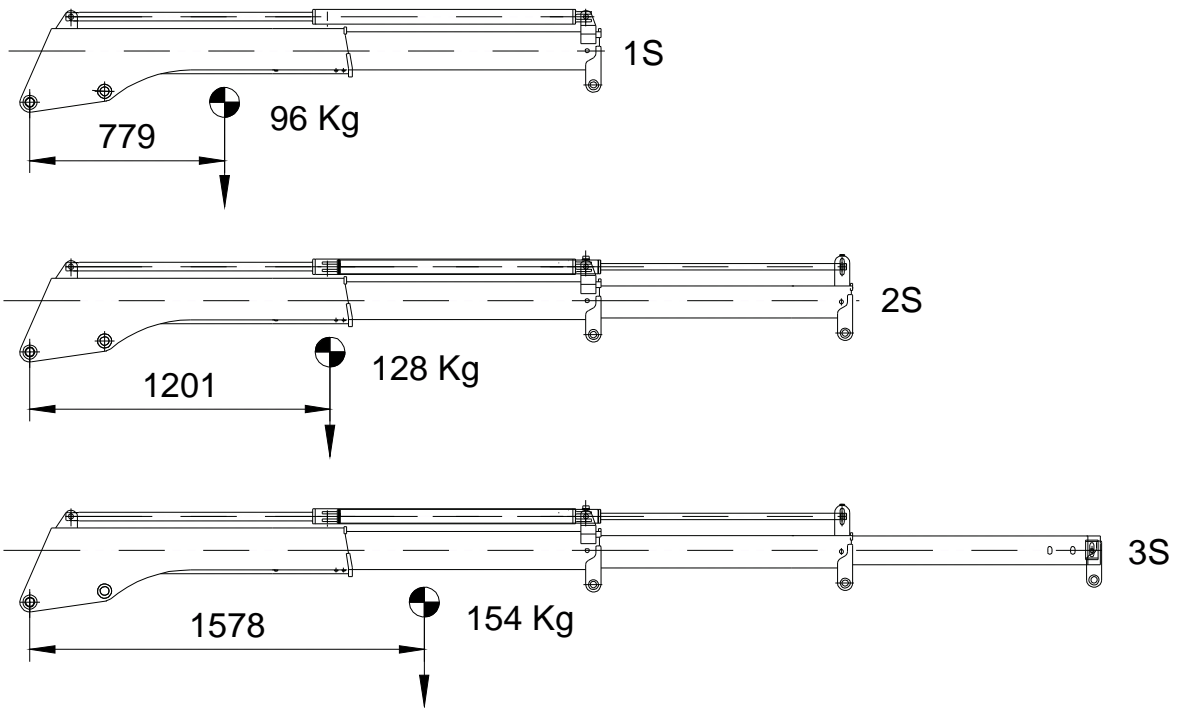


<b>Fixing bolts</b>	N°4 M22x2.5 L=80 10.9 DIN 6914	<b>Tightening torque</b>	240 Nm
---------------------	-----------------------------------	--------------------------	--------



# 604TM TECHNICAL SHEET

## WEIGHTS - CENTERS OF GRAVITY

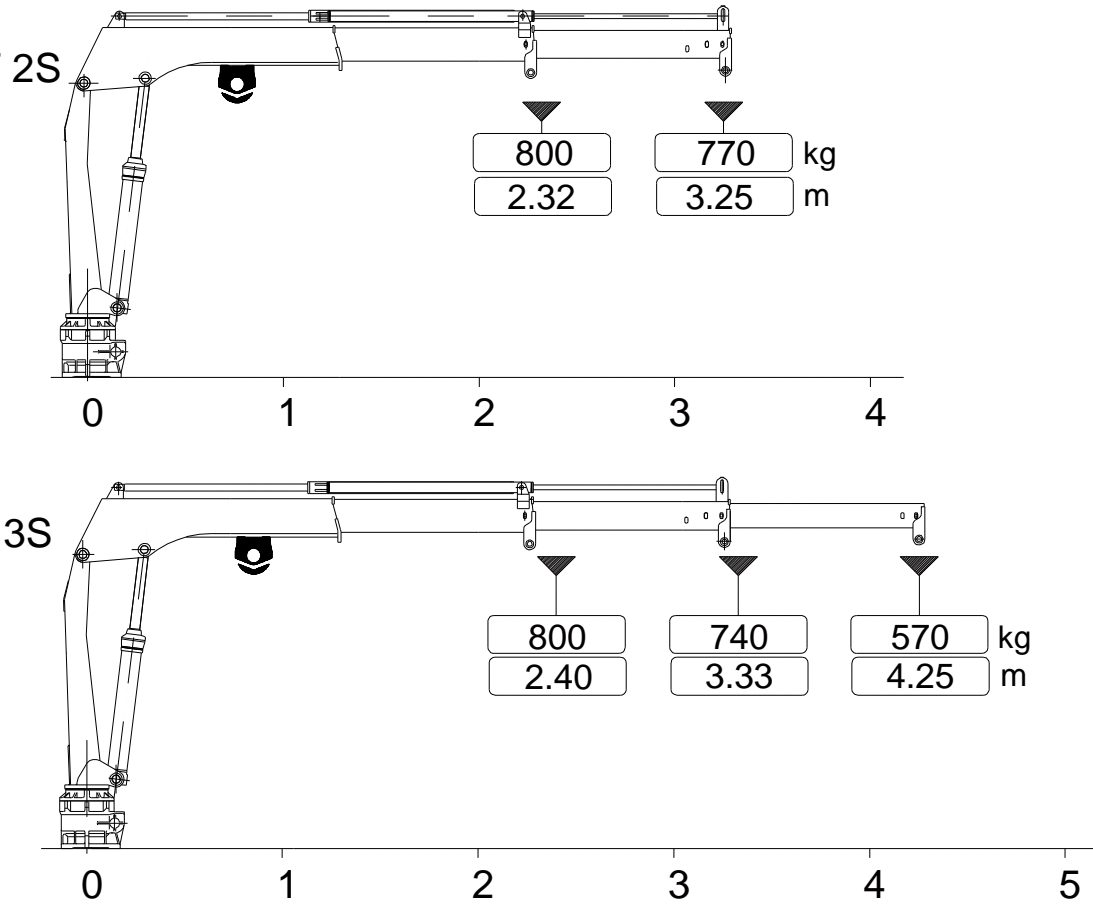


	<b>Crane only</b>
<b>Fixed parts weight</b>	167



# 604TM TECHNICAL SHEET

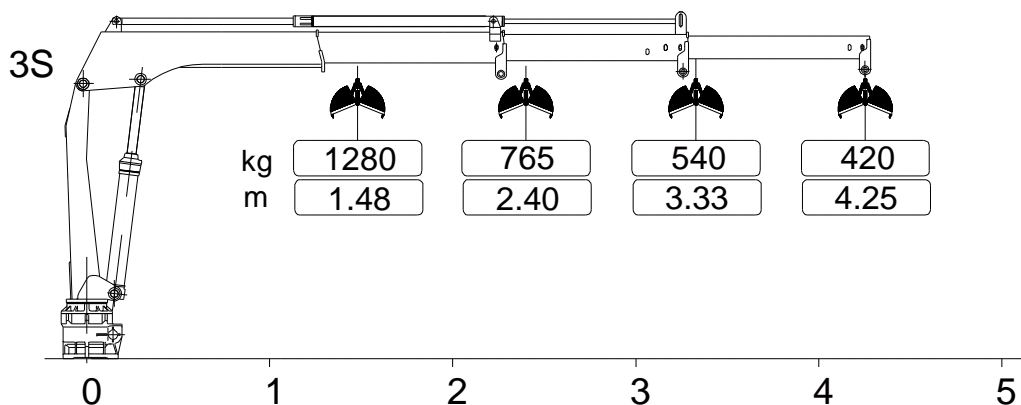
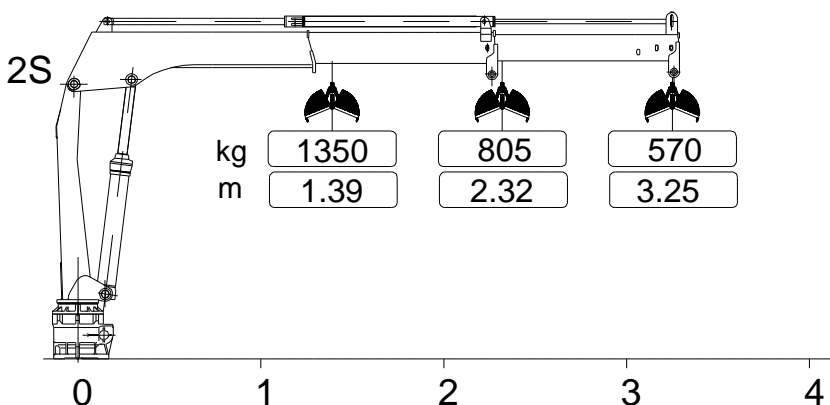
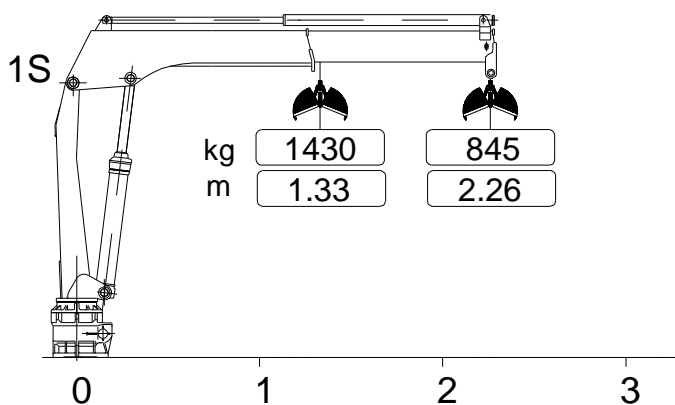
## HYDRAULIC WINCH DATA



### GRU CRANE – 2S – 3S

Max winch direct pull [kg]	800
----------------------------	-----





<b>Max allowable weight</b>	70 kg
<b>Max working pressure</b>	130 bar

